

For Research Use Only

CoraLite®594-conjugated GP73/GOLPH2 Monoclonal antibody



Catalog Number: ~~CL594-66331~~

Basic Information

Catalog Number: CL594-66331	GenBank Accession Number: BC001740	Purification Method: Protein G purification
Size: 100ul , Concentration: 2000 µg/ml by Bradford method using BSA as the standard;	GeneID (NCBI): 51280	CloneNo.: 3D1F1
Source: Mouse	Full Name: golgi membrane protein 1	Recommended Dilutions: IF 1:50-1:500
Isotype: IgG1	Calculated MW: 45 kDa	Excitation/Emission maxima wavelengths: 593 nm/614 nm
Immunogen Catalog Number: AG7207		

Applications

Tested Applications: IF	Positive Controls: IF : HepG2 cells, HeLa cells
Species Specificity: human	

Background Information

Golgi phosphoprotein 2 (GOLPH2, also known as GP73 or GOLM1) is a resident Golgi type-II membrane protein. It is predominantly expressed in the epithelial cells of many human tissues. GOLPH2 traffics through endosomes and can be secreted into the circulation. Its expression is upregulated in a number of tumors and GOLPH2 could be a promising serum marker for hepatocellular carcinoma. We got 73 kDa in western blotting due to phosphorylation.

Storage

Storage:
Store at -20°C. Avoid exposure to light. Stable for one year after shipment.
Storage Buffer:
PBS with 0.02% sodium azide and 50% glycerol pH 7.3.
Aliquoting is unnecessary for -20°C storage

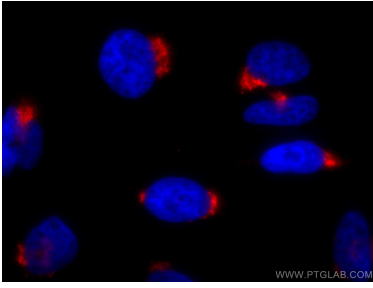
For technical support and original validation data for this product please contact:

T: 1 (888) 4PTGLAB (1-888-478-4522) (toll free
in USA), or 1(312) 455-8498 (outside USA)

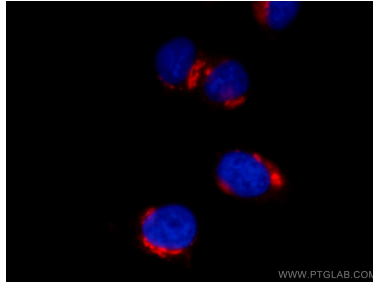
E: proteintech@ptglab.com
W: ptglab.com

This product is exclusively available under Proteintech Group brand and is not available to purchase from any other manufacturer.

Selected Validation Data



Immunofluorescent analysis of (4% PFA) fixed HeLa cells using CoraLite®594 GP73/GOLPH2 antibody (CL594-66331, Clone: 3D1F1) at dilution of 1:200.



Immunofluorescent analysis of (4% PFA) fixed HepG2 cells using CL594-66331 (GP73/GOLPH2 antibody) at dilution of 1:100.