

For Research Use Only

CoraLite®594-conjugated SOX2 Monoclonal antibody

Catalog Number:CL594-66411

Featured Product



Basic Information

Catalog Number:

CL594-66411

Size:

100ul , Concentration: 1000 ug/ml by Nanodrop;

Source:

Mouse

Isotype:

IgG1

Immunogen Catalog Number:

AG13635

GenBank Accession Number:

BC013923

GeneID (NCBI):

6657

UNIPROT ID:

P48431

Full Name:

SRY (sex determining region Y)-box 2

Calculated MW:

34 kDa

Observed MW:

34-40 kDa

Purification Method:

Protein G purification

CloneNo.:

4B9B10

Recommended Dilutions:

IF-P: 1:50-1:500

IF/ICC: 1:50-1:500

FC (Intra): 0.20 ug per 10⁶ cells in a 100 µl suspension

Excitation/Emission maxima wavelengths:

588 nm / 604 nm

Applications

Tested Applications:

IF/ICC, IF-P, FC (Intra)

Species Specificity:

human, mouse, rat

Positive Controls:

IF-P : mouse brain tissue, rat brain tissue

IF/ICC : U-251 cells,

FC (Intra) : U-251 cells,

Background Information

Sox2, also known as SRY (sex determining region Y)-box 2, is a transcription factor essential for maintaining self-renewal of undifferentiated ES cells and is one of the key transcription factors used to reprogram mouse and human fibroblasts to a pluripotent state. Sox2 expressed in undifferentiated pluripotent stem cells and germ cells during development. This antibody is raised against an internal region of human SOX2. And the antibody is conjugated with CL594, Ex/Em 593 nm/614 nm.

Storage

Storage:

Store at -20°C. Avoid exposure to light. Stable for one year after shipment.

Storage Buffer:

PBS with 50% glycerol, 0.05% Proclin300, 0.5% BSA, pH7.3

Aliquoting is unnecessary for -20°C storage

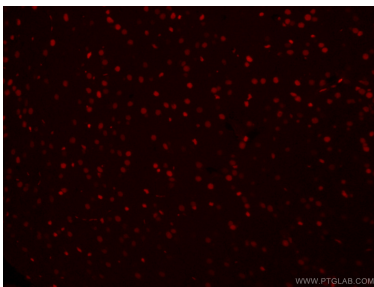
For technical support and original validation data for this product please contact:

T: 1 (888) 4PTGLAB (1-888-478-4522) (toll free in USA), or 1(312) 455-8498 (outside USA)

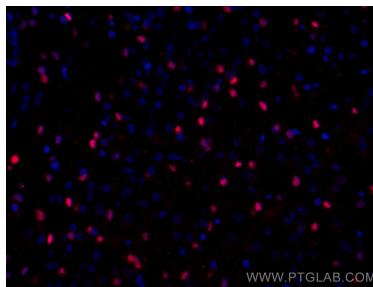
E: proteintech@ptglab.com
W: ptglab.com

This product is exclusively available under Proteintech Group brand and is not available to purchase from any other manufacturer.

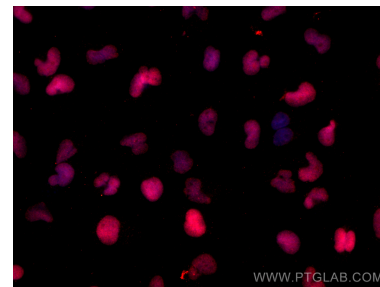
Selected Validation Data



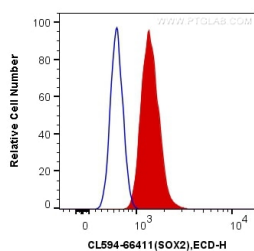
Immunofluorescent analysis of (4% PFA) fixed mouse brain tissue using CL594-66411 (SOX2 antibody) at dilution of 1:50.



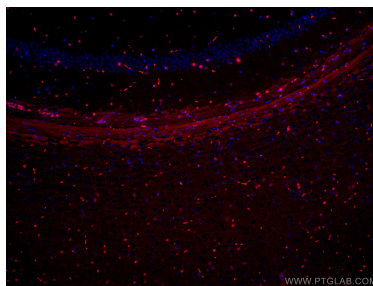
Immunofluorescent analysis of (4% PFA) fixed rat brain tissue using CoraLite®594 SOX2 antibody (CL594-66411, Clone: 4B9B10) at dilution of 1:400.



Immunofluorescent analysis of (4% PFA) fixed U-251 cells using CoraLite®594 SOX2 antibody (CL594-66411, Clone: 4B9B10) at dilution of 1:200.



1X10⁶ U-251 cells were intracellularly stained with 0.2 ug CoraLite®594 Anti-Human SOX2 (CL594-66411, Clone:4B9B10) (red), or 0.2 ug Mouse IgG1 Isotype Control (CL594-66360, Clone: T1F8D3F10) (blue). Cells were fixed and permeabilized with Transcription Factor Staining Buffer Kit (PF00011).



Immunofluorescent analysis of (4% PFA) fixed mouse brain tissue using CoraLite®594 SOX2 antibody (CL594-66411, Clone: 4B9B10) at dilution of 1:200. DAPI (blue).