

For Research Use Only

# CoraLite®594-conjugated Caspase 2/P32/P18 Monoclonal antibody

Catalog Number:CL594-66517



## Basic Information

<b>Catalog Number:</b> CL594-66517	<b>GenBank Accession Number:</b> BC002427	<b>Purification Method:</b> Protein G purification
<b>Size:</b> 100ul , Concentration: 1000 ug/ml by Nanodrop;	<b>GeneID (NCBI):</b> 835	<b>CloneNo.:</b> 2G4C2
<b>Source:</b> Mouse	<b>UNIPROT ID:</b> P42575	<b>Recommended Dilutions:</b> IF/ICC 1:50-1:500
<b>Isotype:</b> IgG1	<b>Full Name:</b> caspase 2, apoptosis-related cysteine peptidase	<b>Excitation/Emission maxima wavelengths:</b> 588 nm / 604 nm
<b>Immunogen Catalog Number:</b> AG20141	<b>Calculated MW:</b> 452 aa, 51 kDa	
	<b>Observed MW:</b> 48-51 kDa, 32 kDa, 18 kDa	

## Applications

<b>Tested Applications:</b> IF/ICC	<b>Positive Controls:</b> IF/ICC : HeLa cells,
<b>Species Specificity:</b> human	

## Background Information

CASP2(Caspase-2) is also named as ICH1, NEDD2 and belongs to the peptidase C14A family.It is involved in the activation cascade of caspases responsible for apoptosis execution and might function by either activating some proteins required for cell death or inactivating proteins necessary for cell survival.It has 2 isoforms produced by alternative splicing and can exists almost as a dimer in solution(PMID:15865942).This antibody can recognize the 32 kDa pro-caspase 2 as well as 18 kDa cleaved-caspase 2.

## Storage

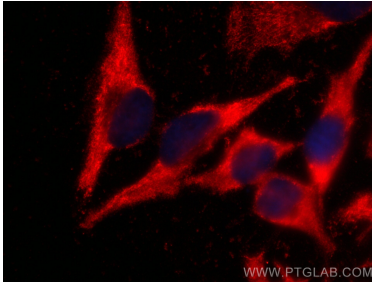
**Storage:**  
Store at -20°C. Avoid exposure to light. Stable for one year after shipment.  
**Storage Buffer:**  
PBS with 50% Glycerol, 0.05% Proclin300, 0.5% BSA, pH 7.3.  
**Aliquoting is unnecessary for -20°C storage**

For technical support and original validation data for this product please contact:  
T: 1 (888) 4PTGLAB (1-888-478-4522) (toll free in USA), or 1(312) 455-8498 (outside USA)  
E: [proteintech@ptglab.com](mailto:proteintech@ptglab.com)  
W: [ptglab.com](http://ptglab.com)

This product is exclusively available under Proteintech Group brand and is not available to purchase from any other manufacturer.

---

## Selected Validation Data



Immunofluorescent analysis of (-20°C Ethanol)  
fixed HeLa cells using CoraLite®594 Caspase  
2/P32/P18 antibody (CL594-66517, Clone: 2G4C2 )  
at dilution of 1:200.