

For Research Use Only

# CoraLite®594-conjugated ARC Monoclonal antibody

Catalog Number: CL594-66550

Featured Product



## Basic Information

Catalog Number:

CL594-66550

Size:

100ul, Concentration: 1000 ug/ml by  
Nanodrop;

Source:

Mouse

Isotype:

IgG1

Immunogen Catalog Number:

AG9445

GenBank Accession Number:

BC012321

GeneID (NCBI):

23237

UNIPROT ID:

Q7LC44

Full Name:

activity-regulated cytoskeleton-  
associated protein

Calculated MW:

396 aa, 45 kDa

Observed MW:

50 kDa

Purification Method:

Protein G purification

CloneNo.:

1G4B5

Recommended Dilutions:

IF/ICC 1:50-1:500

Excitation/Emission maxima  
wavelengths:

588 nm / 604 nm

## Applications

Tested Applications:

IF/ICC

Species Specificity:

Human, Mouse, Rat, Pig, rabbit

Positive Controls:

IF/ICC : SH-SY5Y cells,

## Background Information

ARC, also named as KIAA0278 and Arg3.1, mediates endocytosis of neuronal AMPA-type glutamate receptors (AMPA). It is required for consolidation of synaptic plasticity as well as formation of long-term memory. ARC plays a role in the regulation of cell morphology and cytoskeletal organization. It is required in the stress fiber dynamics and cell migration. Recent study shows that expression of Arc can regulate cognitive flexibility.

## Storage

Storage:

Store at -20°C. Avoid exposure to light. Stable for one year after shipment.

Storage Buffer:

PBS with 50% Glycerol, 0.05% Proclin300, 0.5% BSA, pH 7.3.

Aliquoting is unnecessary for -20°C storage

For technical support and original validation data for this product please contact:

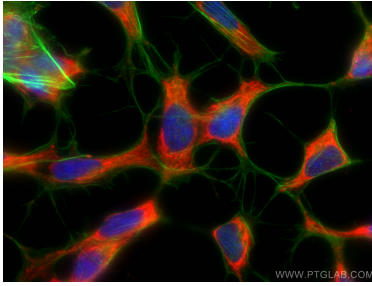
T: 1 (888) 4PTGLAB (1-888-478-4522) (toll free  
in USA), or 1(312) 455-8498 (outside USA)

E: [proteintech@ptglab.com](mailto:proteintech@ptglab.com)  
W: [ptglab.com](http://ptglab.com)

This product is exclusively available under Proteintech Group brand and is not available to purchase from any other manufacturer.

---

## Selected Validation Data



Immunofluorescent analysis of (-20°C Ethanol) fixed SH-SY5Y cells using CoraLite®594 ARC antibody (CL594-66550, Clone: 1G4B5 ) at dilution of 1:200, CL488-Phalloidin (green).