

For Research Use Only

# CoraLite®594-conjugated ATF6 Monoclonal antibody



Catalog Number:CL594-66563

## Basic Information

<b>Catalog Number:</b> CL594-66563	<b>GenBank Accession Number:</b> BC014969	<b>Purification Method:</b> Protein G purification
<b>Size:</b> 100UL, Concentration: 1000 µg/ml by 22926 Nanodrop;	<b>GeneID (NCBI):</b> 22926	<b>CloneNo.:</b> 3B7E4
<b>Source:</b> Mouse	<b>Full Name:</b> activating transcription factor 6	<b>Recommended Dilutions:</b> IF 1:50-1:500
<b>Isotype:</b> IgG1	<b>Calculated MW:</b> 75 kDa	<b>Excitation/Emission maxima wavelengths:</b> 593 nm/614 nm
<b>Immunogen Catalog Number:</b> AG21456	<b>Observed MW:</b> 100 kDa	

## Applications

<b>Tested Applications:</b> IF	<b>Positive Controls:</b> IF : HepG2 cells,
<b>Species Specificity:</b> Human, mouse, rat	

## Background Information

Activating transcription factor 6 (ATF6) is a transcription factor that acts during endoplasmic reticulum stress by activating unfolded protein response target genes. Binds DNA on the 5'-CCAC[GA]-3' half of the ER stress response element (ERSE) (5'-CCAAT-N(9)-CCAC[GA]-3') and of ERSE II (5'-ATTGG-N-CCACG-3'). Binding to ERSE requires binding of NF- $\kappa$ B to ERSE. Could also be involved in activation of transcription by the serum response factor. During unfolded protein response an approximative 50 kDa fragment containing the cytoplasmic transcription factor domain is released by proteolysis. The cleavage seems to be performed sequentially by site-1 and site-2 proteases. The fully glycosylated form of ATF6, a 670 amino acid protein, exhibits an electrophoretic mobility of ~90 kDa in denaturing SDS-gels, in part because of the glycosylated modifications. ATF6 has 3 consensus sites for N-linked glycosylation and exists constitutively as a glycosylated protein. Differentially glycosylated ATF6 forms may result from mutations or experimental treatment (PMID:15804611) (PMID:14699159). The antibody recognizes cleaved and fully glycosylated forms of ATF6.

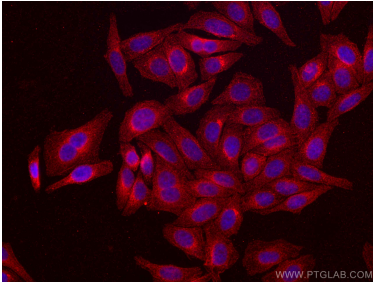
## Storage

**Storage:**  
Store at -20°C. Avoid exposure to light.  
**Storage Buffer:**  
PBS with 50% Glycerol, 0.05% Proclin300, 0.5% BSA, pH 7.3.  
Aliquoting is unnecessary for -20°C storage

For technical support and original validation data for this product please contact:  
T: 1 (888) 4PTGLAB (1-888-478-4522) (toll free in USA), or 1(312) 455-8498 (outside USA)  
E: proteintech@ptglab.com  
W: ptglab.com

This product is exclusively available under Proteintech Group brand and is not available to purchase from any other manufacturer.

## Selected Validation Data



Immunofluorescent analysis of (4% PFA) fixed HepG2 cells using Coralite®594 ATF6 antibody (CL594-66563, Clone: 3B7E4) at dilution of 1:100.