

For Research Use Only

# CoraLite®594-conjugated SDHA Monoclonal antibody



Catalog Number:CL594-66588

## Basic Information

<b>Catalog Number:</b> CL594-66588	<b>GenBank Accession Number:</b> BC001380	<b>Purification Method:</b> Protein G purification
<b>Size:</b> 100UL, Concentration: 1000 µg/ml by Nanodrop;	<b>GeneID (NCBI):</b> 6389	<b>CloneNo.:</b> 5E10G12
<b>Source:</b> Mouse	<b>Full Name:</b> succinate dehydrogenase complex, subunit A, flavoprotein (Fp)	<b>Recommended Dilutions:</b> IF 1:50-1:500
<b>Isotype:</b> IgG1	<b>Calculated MW:</b> 73 kDa	<b>Excitation/Emission maxima wavelengths:</b> 593 nm/614 nm
<b>Immunogen Catalog Number:</b> AG7023	<b>Observed MW:</b> 62-73 kDa	

## Applications

<b>Tested Applications:</b> IF, ELISA	<b>Positive Controls:</b> IF : HepG2 cells,
<b>Species Specificity:</b> Human, Mouse, Rat	

## Background Information

SDHA, also named as SDH2, SDHF and Fp, belongs to the FAD-dependent oxidoreductase 2 family and FRD/SDH subfamily. SDHA is the flavoprotein subunit of succinate dehydrogenase (SDH) that is involved in complex II of the mitochondrial electron transport chain and is responsible for transferring electrons from succinate to ubiquinone (coenzyme Q). SDHA has 3 isoforms with the molecular mass of 73, 67 and 57 kDa, and the N-terminal (~5 kDa) can be removed in mature form. It can be detected a band of 68 kDa in cutaneous melanoma(PMID:21698147). SDHA may act as a tumor suppressor.

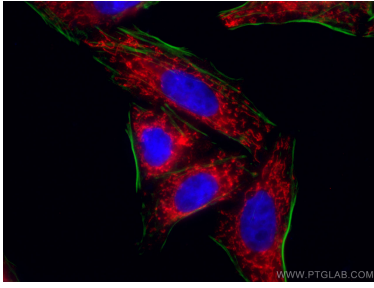
## Storage

**Storage:**  
Store at -20°C. Avoid exposure to light. Stable for one year after shipment.  
**Storage Buffer:**  
PBS with 50% Glycerol, 0.05% Proclin300, 0.5% BSA, pH 7.3.  
Aliquoting is unnecessary for -20°C storage

For technical support and original validation data for this product please contact:  
T: 1 (888) 4PTGLAB (1-888-478-4522) (toll free in USA), or 1(312) 455-8498 (outside USA)  
E: proteintech@ptglab.com  
W: ptglab.com

This product is exclusively available under Proteintech Group brand and is not available to purchase from any other manufacturer.

## Selected Validation Data



Immunofluorescent analysis of (4% PFA) fixed HepG2 cells using CoraLite®594-conjugated SDHA antibody (CL594-66588, Clone: 5E10G12 ) at dilution of 1:100.