

For Research Use Only

# CoraLite®594-conjugated RHOA Monoclonal antibody



Catalog Number:CL594-66733

## Basic Information

<b>Catalog Number:</b> CL594-66733	<b>GenBank Accession Number:</b> BC005976	<b>Purification Method:</b> Protein G purification
<b>Size:</b> 100UL, Concentration: 2000 µg/ml by Bradford method using BSA as the standard;	<b>GeneID (NCBI):</b> 387	<b>CloneNo.:</b> 1B3D7
<b>Source:</b> Mouse	<b>Full Name:</b> ras homolog gene family, member A	<b>Recommended Dilutions:</b> IF 1:50-1:500
<b>Isotype:</b> IgG1	<b>Calculated MW:</b> 22 kDa	<b>Excitation/Emission maxima wavelengths:</b> 593 nm/614 nm
<b>Immunogen Catalog Number:</b> AG1141	<b>Observed MW:</b> 22 kDa	

## Applications

<b>Tested Applications:</b> IF, ELISA	<b>Positive Controls:</b> IF : HeLa cells,
<b>Species Specificity:</b> Human	

## Background Information

RhoA is a member of the Rho family of small GTPases, which cycle between inactive GDP-bound and active GTP-bound states and function as molecular switches in signal transduction cascades. Rho proteins promote reorganization of the actin cytoskeleton and regulate cell shape, attachment, and motility. Overexpression of RhoA is associated with tumor cell proliferation and metastasis. RhoA signalling is critical to many cellular processes including migration, mechanotransduction, and is often disrupted in carcinogenesis.

## Storage

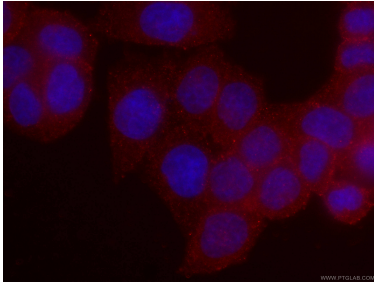
**Storage:**  
Store at -20°C. Avoid exposure to light. Stable for one year after shipment.  
**Storage Buffer:**  
PBS with 50% Glycerol, 0.05% Proclin300, 0.5% BSA, pH 7.3.  
Aliquoting is unnecessary for -20°C storage

For technical support and original validation data for this product please contact:  
T: 1 (888) 4PTGLAB (1-888-478-4522) (toll free in USA), or 1(312) 455-8498 (outside USA)  
E: proteintech@ptglab.com  
W: ptglab.com

This product is exclusively available under Proteintech Group brand and is not available to purchase from any other manufacturer.

---

## Selected Validation Data



Immunofluorescent analysis of (4% PFA) fixed HeLa cells using CL594-66733 (RHOA antibody) at dilution of 1:100.