

For Research Use Only

CoraLite®594-conjugated GLUT4 Monoclonal antibody



Catalog Number:CL594-66846

Basic Information

| | | |
|--|--|---|
| Catalog Number: CL594-66846 | GenBank Accession Number: BC069615 | Purification Method: Protein A purification |
| Size: 100ul , Concentration: 1000 µg/ml by Nanodrop; | GeneID (NCBI): 6517 | CloneNo.: 3G7C9 |
| Source: Mouse | UNIPROT ID: P14672 | Recommended Dilutions: IF/ICC 1:50-1:500 |
| Isotype: IgG2b | Full Name: solute carrier family 2 (facilitated glucose transporter), member 4 | Excitation/Emission maxima wavelengths: 588 nm / 604 nm |
| Immunogen Catalog Number: AG15390 | Calculated MW: 509 aa, 55 kDa | |
| | Observed MW: 48-50 kDa | |

Applications

| | |
|---|---|
| Tested Applications: IF/ICC, FC (Intra) | Positive Controls: IF/ICC : HeLa cells, |
| Species Specificity: human, mouse, rat, pig | |

Background Information

GLUT4 is a member of GLUT family of transmembrane hexose transporters. It is an INS receptor that mediates INS-stimulated glucose transport in fat and muscle where it is predominantly expressed. In response to INS stimulation, GLUT4 experienced translocation from trans-Golgi network to plasma membrane. The impairment of GLUT4 translocation is associated with diabetes.

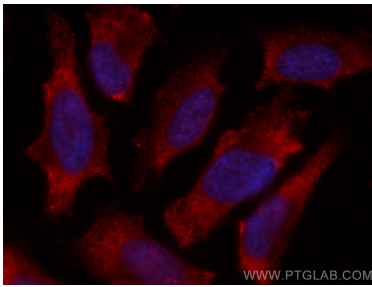
Storage

Storage:
Store at -20°C. Avoid exposure to light. Stable for one year after shipment.
Storage Buffer:
PBS with 50% Glycerol, 0.05% Proclin300, 0.5% BSA, pH 7.3.
Aliquoting is unnecessary for -20°C storage

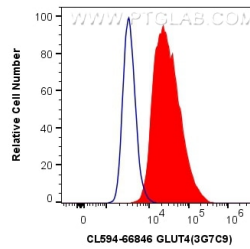
For technical support and original validation data for this product please contact:
T: 1 (888) 4PTGLAB (1-888-478-4522) (toll free in USA), or 1(312) 455-8498 (outside USA)
E: proteintech@ptglab.com
W: ptglab.com

This product is exclusively available under Proteintech Group brand and is not available to purchase from any other manufacturer.

Selected Validation Data



Immunofluorescent analysis of (-20°C Ethanol) fixed HeLa cells using CoraLite®594 GLUT4 antibody (CL594-66846, Clone: 3G7C9) at dilution of 1:200.



1X10⁶ HEK-293 cells were intracellularly stained with 0.4 ug CoraLite®594 Anti-Human GLUT4 (CL594-66846, Clone:3G7C9) (red), or 0.4 ug Mouse IgG2b Isotype Control (CL594-66360-3, Clone: K11B8C4B5) (blue). Cells were fixed with 4% PFA and permeabilized with Flow Cytometry Perm Buffer (PF00011-C).