

For Research Use Only

CoraLite®594-conjugated Cathepsin L Monoclonal antibody

Catalog Number:CL594-66914



Basic Information

Catalog Number: CL594-66914	GenBank Accession Number: BC012612	Purification Method: Protein A purification
Size: 100ul , Concentration: 1000 ug/ml by Nanodrop;	GeneID (NCBI): 1514	CloneNo.: 1A12G8
Source: Mouse	UNIPROT ID: P07711	Recommended Dilutions: IF/ICC 1:50-1:500
Isotype: IgG2b	Full Name: cathepsin L1	Excitation/Emission maxima wavelengths: 588 nm / 604 nm
Immunogen Catalog Number: AG27951	Calculated MW: 38 kDa	
	Observed MW: 43 kDa	

Applications

Tested Applications: IF/ICC, FC (Intra)	Positive Controls: IF/ICC : HeLa cells,
Species Specificity: human	

Background Information

CTSL1(Cathepsin L1) is also named as CTSL and MEP, belongs to the peptidase C1 family. It is a lysosomal proteinase whose expression is also up-regulated in the skeletal muscle during starvation(PMID:20088826). It plays an intracellular role in normal intestinal epithelial polarization and initiation of neoplasia(PMID:17622569). CTSL1 also improves cardiac function and inhibits cardiac hypertrophy, inflammation, and fibrosis through blocking AKT/GSK3B signaling(PMID:19096818). The full length protein is 38 kDa with a signal peptide, two propeptide and a glycosylation site. It has been detected the 36 kDa, 39 kDa, 29 kDa and 21 kDa in rat gastrocnemius muscle. These forms of cathepsin L could either be attributed to differences in glycosylation or to partial processing of the proenzyme. (PMID:11696001)

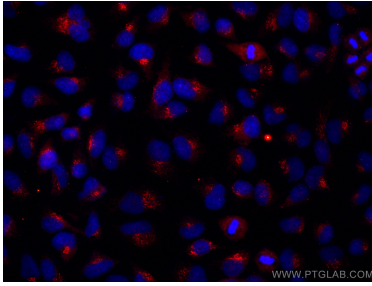
Storage

Storage:
Store at -20°C. Avoid exposure to light. Stable for one year after shipment.
Storage Buffer:
PBS with 50% Glycerol, 0.05% Proclin300, 0.5% BSA, pH 7.3.
Aliquoting is unnecessary for -20°C storage

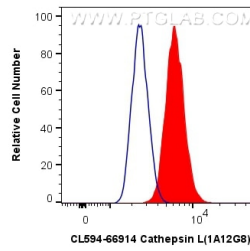
For technical support and original validation data for this product please contact:
T: 1 (888) 4PTGLAB (1-888-478-4522) (toll free in USA), or 1(312) 455-8498 (outside USA)
E: proteintech@ptglab.com
W: ptglab.com

This product is exclusively available under Proteintech Group brand and is not available to purchase from any other manufacturer.

Selected Validation Data



Immunofluorescent analysis of (-20°C Ethanol) fixed HeLa cells using CoraLite®594 Cathepsin L antibody (CL594-66914, Clone: 1A12G8) at dilution of 1:200.



1X10⁶ A549 cells were intracellularly stained with 0.8 ug CoraLite®594 Anti-Human Cathepsin L (CL594-66914, Clone:1A12G8) (red), or 0.8 ug Control Antibody. Cells were fixed with 4% PFA and permeabilized with Flow Cytometry Perm Buffer (PF00011-C).