

For Research Use Only

CoraLite®594-conjugated GLUD1 Monoclonal antibody



Catalog Number:CL594-67026

Basic Information

Catalog Number: CL594-67026	GenBank Accession Number: BC040132	Purification Method: Protein A purification
Size: 100UL, Concentration: 984 µg/ml by Nanodrop;	GeneID (NCBI): 2746	CloneNo.: 4G10D3
Source: Mouse	Full Name: glutamate dehydrogenase 1	Recommended Dilutions: IF 1:50-1:500
Isotype: IgG2b	Calculated MW: 61 kDa	Excitation/Emission maxima wavelengths: 593 nm/614 nm
Immunogen Catalog Number: AG6179	Observed MW: 45-55 kDa	

Applications

Tested Applications:
IF, ELISA

Species Specificity:
Human, Mouse, Rat

Positive Controls:
IF : human liver cancer tissue,

Background Information

Human glutamate dehydrogenase (GDH), an enzyme central to the metabolism of glutamate, is known to exist in housekeeping and nerve tissue-specific isoforms encoded by the GLUD1 and GLUD2 genes, respectively. It catalyses the reversible inter-conversion of glutamate to alpha-ketoglutarate and ammonia, thus interconnecting amino acid and carbohydrate metabolism. GLUD1 might contribute to the formation of specific synapses in the hippocampus such as those formed by the projecting neurons of the entorhinal cortex (PMID: 22138648). GLUD1 has a calculated molecular mass of 61 kDa and an apparent molecular mass of 45-55 kDa with the 53aa transit peptide removed.

Storage

Storage:
Store at -20°C. Avoid exposure to light.

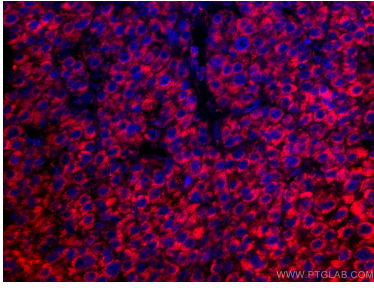
Storage Buffer:
PBS with 50% Glycerol, 0.05% Proclin300, 0.5% BSA, pH 7.3.

Aliquoting is unnecessary for -20°C storage

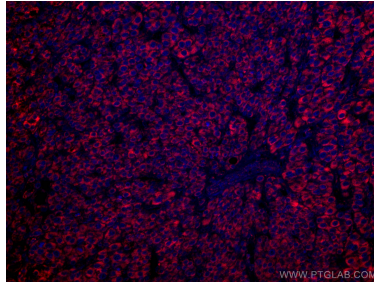
For technical support and original validation data for this product please contact:
T: 1 (888) 4PTGLAB (1-888-478-4522) (toll free in USA), or 1(312) 455-8498 (outside USA) E: proteintech@ptglab.com
W: ptglab.com

This product is exclusively available under Proteintech Group brand and is not available to purchase from any other manufacturer.

Selected Validation Data



Immunofluorescent analysis of (4% PFA) fixed human liver cancer tissue using CoraLite®594-conjugated GLUD1 antibody (CL594-67026, Clone: 4G10D3) at dilution of 1:200.



Immunofluorescent analysis of (4% PFA) fixed human liver cancer tissue using CoraLite®594-conjugated GLUD1 antibody (CL594-67026, Clone: 4G10D3) at dilution of 1:200.