

For Research Use Only

CoraLite®594-conjugated ENO1 Monoclonal antibody



Catalog Number:CL594-67187

Basic Information

Catalog Number: CL594-67187	GenBank Accession Number: BC015641	Purification Method: Thiophilic affinity chromatograph
Size: 100UL , Concentration: 1000 µg/ml by 2023 Nanodrop;	GeneID (NCBI): enolase 1, (alpha)	CloneNo.: 1D6E8
Source: Mouse	Full Name: enolase 1, (alpha)	Recommended Dilutions: IF 1:50-1:500
Isotype: IgM	Calculated MW: 47 kDa	Excitation/Emission maxima wavelengths: 593 nm/614 nm
Immunogen Catalog Number: AG17518	Observed MW: 47 kDa	

Applications

Tested Applications: IF	Positive Controls: IF : HeLa cells,
Species Specificity: Human, Mouse, Rat, Pig	

Background Information

ENO1, also named as NNE, ENO1L1, MBPB1, MPB1 and MBP1, belongs to the enolase family. It is a multifunctional enzyme that, as well as its role in glycolysis, plays a part in various processes such as growth control, hypoxia tolerance and allergic responses. ENO1 may also function in the intravascular and pericellular fibrinolytic system due to its ability to serve as a receptor and activator of plasminogen on the cell surface of several cell-types such as leukocytes and neurons. It stimulates immunoglobulin production. (PMID:2005901).

Storage

Storage:
Store at -20°C. Avoid exposure to light.
Storage Buffer:
PBS with 50% Glycerol, 0.05% Proclin300, 0.5% BSA, pH 7.3.
Aliquoting is unnecessary for -20°C storage

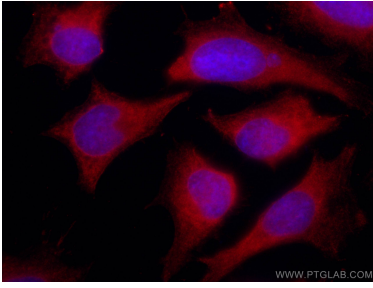
For technical support and original validation data for this product please contact:

T: 1 (888) 4PTGLAB (1-888-478-4522) (toll free
in USA), or 1(312) 455-8498 (outside USA)

E: proteintech@ptglab.com
W: ptglab.com

This product is exclusively available under Proteintech Group brand and is not available to purchase from any other manufacturer.

Selected Validation Data



Immunofluorescent analysis of (-20°C Ethanol) fixed HeLa cells using Coralite®594-conjugated ENO1 antibody (CL594-67187, Clone: 1D6E8) at dilution of 1:100.