

For Research Use Only

CoraLite®594-conjugated EEF2 Monoclonal antibody

Catalog Number:CL594-67550



Basic Information

Catalog Number: CL594-67550	GenBank Accession Number: BC126259	Purification Method: Protein G purification
Size: 100ul , Concentration: 1000 ug/ml by Nanodrop;	GeneID (NCBI): 1938	CloneNo.: 1E4D5
Source: Mouse	UNIPROT ID: P13639	Recommended Dilutions: IF/ICC 1:50-1:500
Isotype: IgG1	Full Name: eukaryotic translation elongation factor 2	Excitation/Emission maxima wavelengths: 588 nm / 604 nm
Immunogen Catalog Number: AG13859	Calculated MW: 858 aa, 95 kDa	

Applications

Tested Applications: IF/ICC, FC (Intra)	Positive Controls: IF/ICC : HepG2 cells,
Species Specificity: human, mouse, rat	

Storage

Storage:
Store at -20°C. Avoid exposure to light. Stable for one year after shipment.
Storage Buffer:
PBS with 50% Glycerol, 0.05% Proclin300, 0.5% BSA, pH 7.3.
Aliquoting is unnecessary for -20°C storage

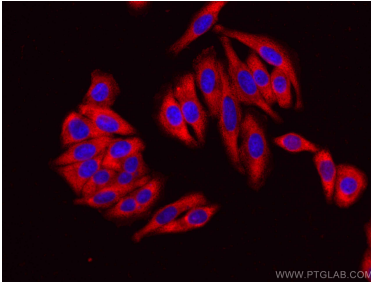
For technical support and original validation data for this product please contact:

T: 1 (888) 4PTGLAB (1-888-478-4522) (toll free
in USA), or 1(312) 455-8498 (outside USA)

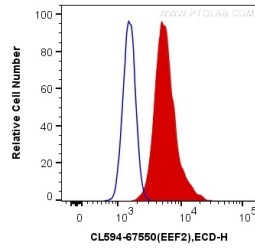
E: proteintech@ptglab.com
W: ptglab.com

This product is exclusively available under Proteintech Group brand and is not available to purchase from any other manufacturer.

Selected Validation Data



Immunofluorescent analysis of (-20°C Ethanol) fixed HepG2 cells using CoraLite®594 EEF2 antibody (CL594-67550, Clone: 1E4D5) at dilution of 1:200.



1x10⁶ HeLa cells were intracellularly stained with 0.2 ug CoraLite®594-conjugated EEF2 Monoclonal antibody (CL594-67550, Clone:1E4D5)(red), or 0.2 ug Mouse IgG1 Isotype Control (CL594-66360, Clone: T1F8D3F10) (blue). Cells were fixed with 4% PFA and permeabilized with Flow Cytometry Perm Buffer (PF00011-C).