

For Research Use Only

CoraLite®594-conjugated CTPS2 Monoclonal antibody

Catalog Number:CL594-67734



Basic Information

Catalog Number:

CL594-67734

Size:

100ul , Concentration: 1000 ug/ml by Nanodrop;

Source:

Mouse

Isotype:

IgG2a

Immunogen Catalog Number:

AG30258

GenBank Accession Number:

BC034986

GeneID (NCBI):

56474

UNIPROT ID:

Q9NRF8

Full Name:

CTP synthase II

Calculated MW:

586 aa, 66 kDa

Observed MW:

66 kDa

Purification Method:

Protein A purification

CloneNo.:

1A3B8

Recommended Dilutions:

IF/ICC 1:50-1:500

Excitation/Emission maxima wavelengths:

588 nm / 604 nm

Applications

Tested Applications:

IF/ICC

Species Specificity:

Human, Mouse

Positive Controls:

IF/ICC : PC-12 cells,

Background Information

CTPS2 (CTP synthase 2) is also named as UTP--ammonia ligase 2 and belongs to the CTP synthase family. It catalyzes the ATP-dependent amination of UTP to CTP with either L-glutamine or ammonia as the source of nitrogen and constitutes the rate-limiting enzyme in the synthesis of cytosine nucleotides.

Storage

Storage:

Store at -20°C. Avoid exposure to light. Stable for one year after shipment.

Storage Buffer:

PBS with 50% Glycerol, 0.05% Proclin300, 0.5% BSA, pH 7.3.

Aliquoting is unnecessary for -20°C storage

For technical support and original validation data for this product please contact:

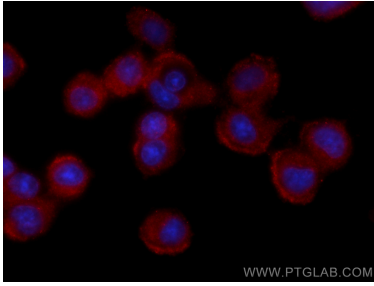
T: 1 (888) 4PTGLAB (1-888-478-4522) (toll free in USA), or 1(312) 455-8498 (outside USA)

E: proteintech@ptglab.com

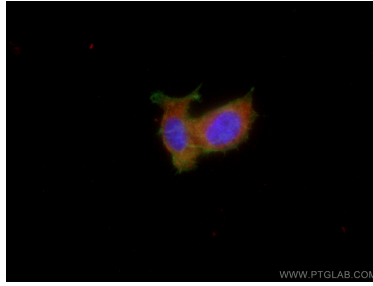
W: ptglab.com

This product is exclusively available under Proteintech Group brand and is not available to purchase from any other manufacturer.

Selected Validation Data



Immunofluorescent analysis of (-20°C Methanol) fixed PC-12 cells using CoraLite® 594 CTP52 antibody (CL594-67734, Clone: 1A3B8) at dilution of 1:200.



Immunofluorescent analysis of (4% PFA) fixed PC-12 cells using CoraLite® 594 CTP52 antibody (CL594-67734, Clone: 1A3B8) at dilution of 1:200, CL488-Phalloidin (green).