

For Research Use Only

CoraLite®594-conjugated ATG16L1 Monoclonal antibody

Catalog Number:CL594-67943



Basic Information

Catalog Number: CL594-67943	GenBank Accession Number: BC000061	Purification Method: Protein G purification
Size: 100ul , Concentration: 1000 ug/ml by Nanodrop;	GeneID (NCBI): 55054	CloneNo.: 1G5G7
Source: Mouse	UNIPROT ID: Q676U5	Recommended Dilutions: IF/ICC 1:50-1:500
Isotype: IgG1	Full Name: ATG16 autophagy related 16-like 1 (S.cerevisiae)	Excitation/Emission maxima wavelengths: 588 nm / 604 nm
Immunogen Catalog Number: AG14881	Calculated MW: 607 aa, 68 kDa	
	Observed MW: 68-75 kDa	

Applications

Tested Applications: IF/ICC	Positive Controls: IF/ICC : HepG2 cells,
Species Specificity: Human, mouse, rat	

Background Information

Human ATG16L1 is a 607 amino acid protein (~68 kDa) comprising three major domains: the N-terminal ATG5 binding domain (ATG5-BD), the central coiled-coil domain (CCD) and a predicted C-terminal WD40-domain. ATG16L1 α and β (Atg16L1 α , 63 kDa; and Atg16L1 β , 71 kDa) are the major isoforms expressed in intestinal epithelium and macrophages, and all isoforms encode exon 9, which contains Thr 300. Atg16L1 mediates the cellular degradative process of autophagy and is considered a critical regulator of inflammation based on its genetic association with inflammatory bowel disease. ATG16L1 has been implicated in Crohn's disease. (PMID: 24553140, PMID: 22740627, PMID: 28685931)

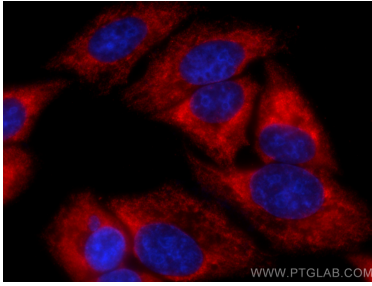
Storage

Storage:
Store at -20°C. Avoid exposure to light. Stable for one year after shipment.
Storage Buffer:
PBS with 50% Glycerol, 0.05% Proclin300, 0.5% BSA, pH 7.3.
Aliquoting is unnecessary for -20°C storage

For technical support and original validation data for this product please contact:
T: 1 (888) 4PTGLAB (1-888-478-4522) (toll free in USA), or 1(312) 455-8498 (outside USA)
E: proteintech@ptglab.com
W: ptglab.com

This product is exclusively available under Proteintech Group brand and is not available to purchase from any other manufacturer.

Selected Validation Data



Immunofluorescent analysis of (-20°C Methanol) fixed HepG2 cells using CoraLite®594 ATG16L1 antibody (CL594-67943, Clone: 1G5G7) at dilution of 1:200.