

For Research Use Only

CoraLite®594-conjugated DDX1 Monoclonal antibody

Catalog Number:CL594-67991

Featured Product



Basic Information

Catalog Number:

CL594-67991

Size:

100ul , Concentration: 1000 ug/ml by
Nanodrop;

Source:

Mouse

Isotype:

IgG1

Immunogen Catalog Number:

AG16774

GenBank Accession Number:

BC012132

GeneID (NCBI):

1653

UNIPROT ID:

Q92499

Full Name:

DEAD (Asp-Glu-Ala-Asp) box
polypeptide 1

Calculated MW:

740 aa, 82 kDa

Observed MW:

82 kDa

Purification Method:

Protein G purification

CloneNo.:

1G10G4

Recommended Dilutions:

IF/ICC 1:200-1:800

Excitation/Emission maxima
wavelengths:

588 nm / 604 nm

Applications

Tested Applications:

IF/ICC

Species Specificity:

Human, mouse, rat

Positive Controls:

IF/ICC : HeLa cells,

Background Information

DDX1 is a DEAD box protein, which is putative RNA helicases with a characteristic asp-glu-ala-asp (DEAD) box motif. DEAD box proteins involve in translation initiation, splicing, and ribosome and spliceosome assembly by altering RNA secondary structure. As a RNA helicase, DDX1 has a role in RNA clearance at DNA double-strand breaks (DSBs), thereby facilitating the template-guided repair of transcriptionally active regions of the genome.

Storage

Storage:

Store at -20°C. Avoid exposure to light. Stable for one year after shipment.

Storage Buffer:

PBS with 50% Glycerol, 0.05% Proclin300, 0.5% BSA, pH 7.3.

Aliquoting is unnecessary for -20°C storage

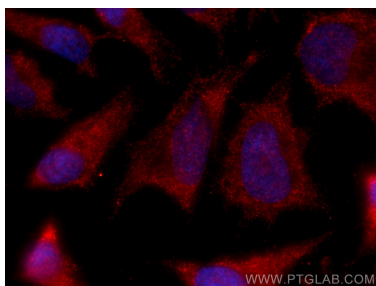
For technical support and original validation data for this product please contact:

T: 1 (888) 4PTGLAB (1-888-478-4522) (toll free
in USA), or 1(312) 455-8498 (outside USA)

E: proteintech@ptglab.com
W: ptglab.com

This product is exclusively available under Proteintech
Group brand and is not available to purchase from any
other manufacturer.

Selected Validation Data



Immunofluorescent analysis of (-20°C Methanol)
fixed HeLa cells using Coralite®594 DDX1
antibody (CL594-67991, Clone: 1G10G4) at dilution
of 1:400.