

For Research Use Only

# CoraLite®594-conjugated RALY Monoclonal antibody

Catalog Number:CL594-68011



## Basic Information

### Catalog Number:

CL594-68011

### Size:

100ul , Concentration: 1000 ug/ml by Nanodrop;

### Source:

Mouse

### Isotype:

IgG1

### Immunogen Catalog Number:

AG12250

### GenBank Accession Number:

BC103753

### GeneID (NCBI):

22913

### UNIPROT ID:

Q9UKM9

### Full Name:

RNA binding protein, autoantigenic (hnRNP-associated with lethal yellow homolog (mouse))

### Calculated MW:

307 aa, 33 kDa

### Observed MW:

37 kDa

### Purification Method:

Protein G purification

### CloneNo.:

2B10C3

### Recommended Dilutions:

IF/ICC: 1:50-1:500

FC (Intra): 0.40 ug per 10<sup>6</sup> cells in a 100 µl suspension

### Excitation/Emission maxima wavelengths:

588 nm / 604 nm

## Applications

### Tested Applications:

IF/ICC, FC (Intra)

### Species Specificity:

Human

### Positive Controls:

IF/ICC : A431 cells,

FC (Intra) : A431 cells,

## Background Information

RNA-binding protein RALY is a protein that in humans is encoded by the RALY gene. In infectious mononucleosis, anti-EBNA-1 antibodies are produced which cross-react with multiple normal human proteins. The cross-reactivity is due to anti-gly/ala antibodies that cross-react with host proteins containing configurations like those in the EBNA-1 repeat. One such antigen is RALY which is a member of the heterogeneous nuclear ribonucleoprotein gene family.

## Storage

### Storage:

Store at -20°C. Avoid exposure to light. Stable for one year after shipment.

### Storage Buffer:

PBS with 50% glycerol, 0.05% Proclin300, 0.5% BSA, pH7.3

Aliquoting is unnecessary for -20°C storage

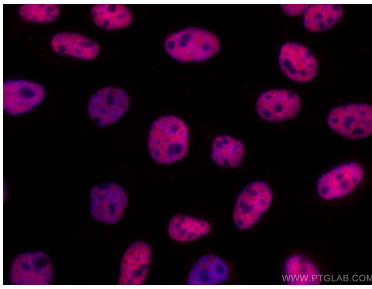
For technical support and original validation data for this product please contact:

T: 1 (888) 4PTGLAB (1-888-478-4522) (toll free in USA), or 1(312) 455-8498 (outside USA)

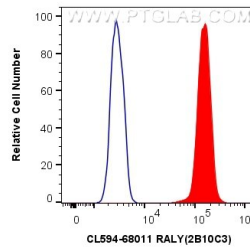
E: [proteintech@ptglab.com](mailto:proteintech@ptglab.com)  
W: [ptglab.com](http://ptglab.com)

This product is exclusively available under Proteintech Group brand and is not available to purchase from any other manufacturer.

## Selected Validation Data



Immunofluorescent analysis of (4% PFA) fixed A431 cells using CoraLite®594 RALY antibody (CL594-68011, Clone: 2B10C3) at dilution of 1:200.



1X10<sup>6</sup> A431 cells were intracellularly stained with 0.4 ug CoraLite®594 Anti-Human RALY (CL594-68011, Clone:2B10C3) (red), or 0.4 ug CoraLite®594 Mouse IgG1 Isotype Control (MOPC-21) (CL594-65124, Clone: MOPC-21) (blue). Cells were fixed and permeabilized with Transcription Factor Staining Buffer Kit (PF00011).