

For Research Use Only

CoraLite®594-conjugated ALDH3A1 Monoclonal antibody



Catalog Number:CL594-68036

Basic Information

Catalog Number: CL594-68036	GenBank Accession Number: BC004370	Purification Method: Protein G purification
Size: 100ul , Concentration: 1000 µg/ml by Nanodrop;	GeneID (NCBI): 218	CloneNo.: 1D4G7
Source: Mouse	UNIPROT ID: P30838	Recommended Dilutions: IF/ICC 1:50-1:500
Isotype: IgG1	Full Name: aldehyde dehydrogenase 3 family, memberA1	Excitation/Emission maxima wavelengths: 588 nm / 604 nm
Immunogen Catalog Number: AG8125	Calculated MW: 50 kDa	
	Observed MW: 50 kDa	

Applications

Tested Applications: IF, FC (Intra)	Positive Controls: IF/ICC : HEK-293 cells,
Species Specificity: Human	

Background Information

ALDH3A1(Aldehyde dehydrogenase, dimeric NADP-preferring), also named as ALDH3, is a member of the ALDH superfamily, which consists of NAD(P)+-dependent enzymes that catalyse the oxidation of a wide variety of endogenously produced and exogenous aldehydes to their corresponding acids. It is expressed at high concentrations in the mammalian cornea and it is believed that it protects this vital tissue and the rest of the eye against UVlight-induced damage.(PMID:12943535). It can exsit as a dimer(PMID:16919242).

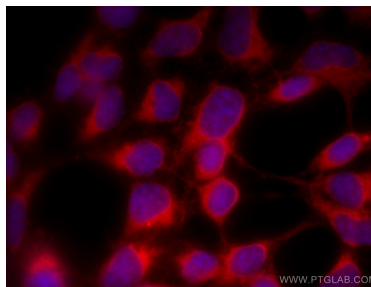
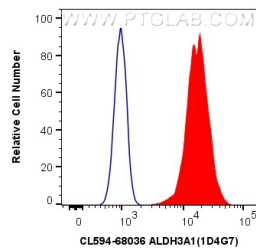
Storage

Storage:
Store at -20°C. Avoid exposure to light. Stable for one year after shipment.
Storage Buffer:
PBS with 50% Glycerol, 0.05% Proclin300, 0.5% BSA, pH 7.3.
Aliquoting is unnecessary for -20°C storage

For technical support and original validation data for this product please contact:
T: 1 (888) 4PTGLAB (1-888-478-4522) (toll free in USA), or 1(312) 455-8498 (outside USA)
E: proteintech@ptglab.com
W: ptglab.com

This product is exclusively available under Proteintech Group brand and is not available to purchase from any other manufacturer.

Selected Validation Data



1×10^6 HEK-293 cells were intracellularly stained with 0.4 μ g CoraLite® 594 Anti-Human ALDH3A1 (CL594-68036, Clone:1D4G7) (red), or 0.4 μ g Control Antibody. Cells were fixed with 4% PFA and permeabilized with Flow Cytometry Perm Buffer (PF00011-C).

Immunofluorescent analysis of (-20°C Ethanol) fixed HEK-293 cells using CoraLite® 594 ALDH3A1 antibody (CL594-68036, Clone: 1D4G7) at dilution of 1:200.