

For Research Use Only

CoraLite®647-conjugated CLTA Polyclonal antibody



Catalog Number: CL647-10852

Featured Product

Basic Information

Catalog Number:

CL647-10852

GenBank Accession Number:

BC019287

Purification Method:

Antigen affinity purification

Size:

100ul , Concentration: 1000 µg/ml by Nanodrop;

GeneID (NCBI):

1211

Recommended Dilutions:

IF 1:50-1:500

Source:

Rabbit

Full Name:

clathrin, light chain (Lca)

Excitation/Emission maxima wavelengths:

650 nm/665 nm

Isotype:

IgG

Calculated MW:

27 kDa

Immunogen Catalog Number:

AG1299

Observed MW:

35-38 kDa

Applications

Tested Applications:

IF

Positive Controls:

IF : HepG2 cells,

Species Specificity:

human, mouse, rat

Background Information

Clathrin is the major protein of the polyhedral coat of coated pits and vesicles which entrap specific macromolecules during receptor-mediated endocytosis. The clathrin molecule has a triskelion shape. Each clathrin triskelion is composed of three identical heavy chains (180 kDa) and three light chains of two types, LCA (CLTA) and LCB (CLTB) (30-40 kDa). The light chain subunits are thought to regulate the formation or disassembly of clathrin coats. (PMID: 2445759; 8374173; 3563513)

Storage

Storage:

Store at -20°C. Avoid exposure to light.

Storage Buffer:

PBS with 50% Glycerol, 0.05% Proclin300, 0.5% BSA, pH 7.3.

Aliquoting is unnecessary for -20°C storage

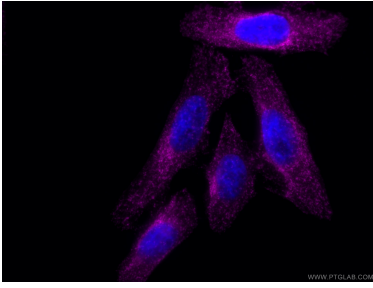
For technical support and original validation data for this product please contact:

T: 1 (888) 4PTGLAB (1-888-478-4522) (toll free in USA), or 1(312) 455-8498 (outside USA)

E: proteintech@ptglab.com
W: ptglab.com

This product is exclusively available under Proteintech Group brand and is not available to purchase from any other manufacturer.

Selected Validation Data



Immunofluorescent analysis of (4% PFA) fixed HepG2 cells using CoraLite®647 CLTA antibody (CL647-10852) at dilution of 1:200.