

For Research Use Only



# CoraLite® Plus 647-conjugated Annexin V Polyclonal antibody

Catalog Number:CL647-11060

Featured Product

## Basic Information

Catalog Number:

CL647-11060

Size:

100ul , Concentration: 1000 µg/ml by Nanodrop;

Source:

Rabbit

Isotype:

IgG

Immunogen Catalog Number:

AG1538

GenBank Accession Number:

BC018671

GeneID (NCBI):

308

UNIPROT ID:

P08758

Full Name:

annexin A5

Calculated MW:

36 kDa

Observed MW:

36 kDa

Purification Method:

Antigen affinity purification

Recommended Dilutions:

IF/ICC 1:50-1:500

Excitation/Emission maxima wavelengths:

654 nm / 674 nm

## Applications

Tested Applications:

IF/ICC, FC (Intra)

Species Specificity:

human, mouse, rat, pig

Positive Controls:

IF/ICC : HeLa cells,

## Background Information

Annexin A5 (ANXA5), is a member of the structurally related family of annexin proteins some of which have been implicated in membrane-related events along exocytotic and endocytotic pathways. Annexin 5 is a phospholipase A2 and protein kinase C inhibitory protein with calcium channel activity and a potential role in cellular signal transduction, inflammation, growth and differentiation. Annexin 5 has also been described as placental anticoagulant protein I, vascular anticoagulant-alpha, endonexin II, lipocortin V, placental protein 4 and anchorin CII.

## Storage

Storage:

Store at -20°C. Avoid exposure to light. Stable for one year after shipment.

Storage Buffer:

PBS with 50% Glycerol, 0.05% Proclin300, 0.5% BSA, pH 7.3.

Aliquoting is unnecessary for -20°C storage

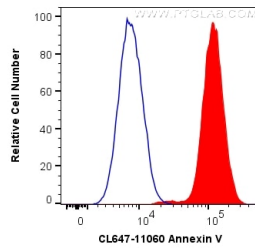
For technical support and original validation data for this product please contact:

T: 1 (888) 4PTGLAB (1-888-478-4522) (toll free in USA), or 1(312) 455-8498 (outside USA)

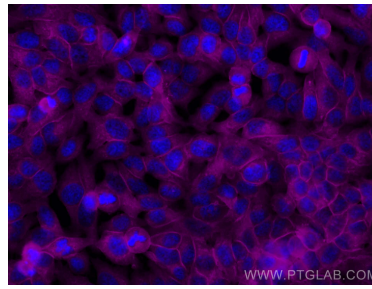
E: [proteintech@ptglab.com](mailto:proteintech@ptglab.com)  
W: [ptglab.com](http://ptglab.com)

This product is exclusively available under Proteintech Group brand and is not available to purchase from any other manufacturer.

## Selected Validation Data



$1 \times 10^6$  HeLa cells were intracellularly stained with 0.2  $\mu$ g CoraLite® Plus 647 Anti-Human Annexin V (CL647-11060) (red), or 0.2  $\mu$ g isotype control (blue). Cells were fixed with 90% MeOH.



Immunofluorescent analysis of (-20°C Methanol) fixed HeLa cells using CoraLite® Plus 647 Annexin V antibody (CL647-11060) at dilution of 1:100.