

For Research Use Only

# CoraLite® Plus 647-conjugated STIM1 Polyclonal antibody



Catalog Number: CL647-11565

Featured Product

## Basic Information

Catalog Number:

CL647-11565

Size:

100ul , Concentration: 1000 µg/ml by  
Nanodrop;

Source:

Rabbit

Isotype:

IgG

Immunogen Catalog Number:

AG2140

GenBank Accession Number:

BC021300

GeneID (NCBI):

6786

UNIPROT ID:

Q13586

Full Name:

stromal interaction molecule 1

Calculated MW:

685 aa, 77 kDa

Observed MW:

77-90 kDa

Purification Method:

Antigen affinity purification

Excitation/Emission maxima  
wavelengths:

654 nm / 674 nm

## Applications

Tested Applications:

FC (Intra)

Species Specificity:

human

## Background Information

STIM1, also named as GOK, is an ER Ca<sup>2+</sup> sensor. Upon Ca<sup>2+</sup> store depletion, STIM1 clusters at ER-plasma membrane junctions where it interacts with and gates Ca<sup>2+</sup>-permeable Orai1 ion channels. STIM1 is implicated in tumor growth suppression and stromal-haematopoietic cell interactions. Defects in STIM1 gene can cause immune dysfunction with impaired T-cell activation. STIM1 can inhibit L-type voltage-gated Ca(2+) channels in neurons. Temperature is an important regulator of STIM1 function. The MW of STIM1 is about 80-90 kDa which may be due to the phosphorylation or glycosylation forms. Catalog#11565-1-AP is rabbit polyclonal antibody raised against the N-terminal of human STIM1.

## Storage

Storage:

Store at -20°C. Avoid exposure to light. Stable for one year after shipment.

Storage Buffer:

PBS with 50% Glycerol, 0.05% Proclin300, 0.5% BSA, pH 7.3.

Aliquoting is unnecessary for -20°C storage

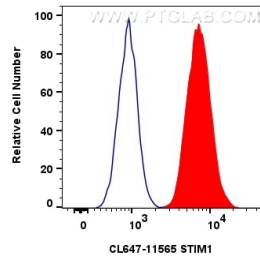
For technical support and original validation data for this product please contact:

T: 1 (888) 4PTGLAB (1-888-478-4522) (toll free  
in USA), or 1(312) 455-8498 (outside USA)

E: [proteintech@ptglab.com](mailto:proteintech@ptglab.com)  
W: [ptglab.com](http://ptglab.com)

This product is exclusively available under Proteintech Group brand and is not available to purchase from any other manufacturer.

## Selected Validation Data



1x10<sup>6</sup> HepG2 cells were intracellularly stained with 0.8 ug CoraLite® Plus 647-conjugated STIM1 Polyclonal antibody (CL647-11565)(red), or 0.8 ug CoraLite® Plus 647-conjugated Rabbit IgG control Rabbit PolyAb (CL647-30000) (blue). Cells were fixed with 4% PFA and permeabilized with Flow Cytometry Perm Buffer (PF00011-C).