

For Research Use Only



# CoraLite® Plus 647-conjugated Hemoglobin Epsilon Polyclonal antibody

Catalog Number: **CL647-12361**

## Basic Information

<b>Catalog Number:</b> CL647-12361	<b>GenBank Accession Number:</b> BC015537	<b>Purification Method:</b> Antigen affinity purification
<b>Size:</b> 100ul , Concentration: 1000 µg/ml by Nanodrop;	<b>GeneID (NCBI):</b> 3046	<b>Recommended Dilutions:</b> IF-P 1:50-1:500
<b>Source:</b> Rabbit	<b>UNIPROT ID:</b> P02100	<b>Excitation/Emission maxima wavelengths:</b> 654 nm / 674 nm
<b>Isotype:</b> IgG	<b>Full Name:</b> hemoglobin, epsilon 1	
<b>Immunogen Catalog Number:</b> AG3026	<b>Calculated MW:</b> 147 aa, 16 kDa	
	<b>Observed MW:</b> 12-16 kDa	

## Applications

<b>Tested Applications:</b> IF-P, FC (Intra)	<b>Positive Controls:</b> IF-P : human placenta tissue,
<b>Species Specificity:</b> human, mouse, rat	

## Background Information

The hemoglobin molecule is a tetramer consisting of two alpha- and two beta-globin-like chains. HBE1 (hemoglobin epsilon chain) is a beta-type chain of hemoglobin predominantly expressed during the embryonic stage (21321359). The HBE1 has been regarded as the best marker for fetal nucleated red blood cells (NRBCs) . This antibody can be used to label and isolate fetal cells from maternal blood and may be useful in prenatal diagnosis (15906407).

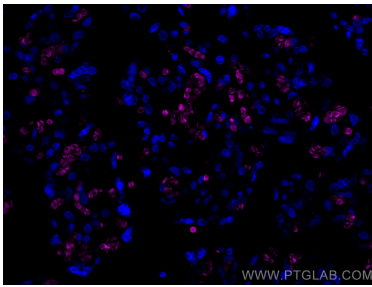
## Storage

**Storage:**  
Store at -20°C. Avoid exposure to light. Stable for one year after shipment.  
**Storage Buffer:**  
PBS with 50% glycerol, 0.05% Proclin300, 0.5% BSA, pH7.3  
**Aliquoting is unnecessary for -20°C storage**

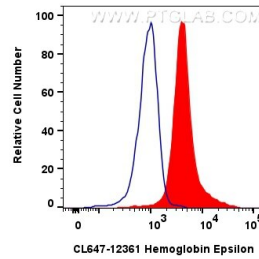
For technical support and original validation data for this product please contact:  
T: 1 (888) 4PTGLAB (1-888-478-4522) (toll free in USA), or 1(312) 455-8498 (outside USA)  
E: [proteintech@ptglab.com](mailto:proteintech@ptglab.com)  
W: [ptglab.com](http://ptglab.com)

This product is exclusively available under Proteintech Group brand and is not available to purchase from any other manufacturer.

## Selected Validation Data



Immunofluorescent analysis of (4% PFA) fixed paraffin-embedded human placenta tissue using CoraLite® Plus 647 Hemoglobin Epsilon antibody (CL647-12361) at dilution of 1:200. Heat mediated antigen retrieval with Tris-EDTA buffer (pH 9.0).



$1 \times 10^6$  K-562 cells were intracellularly stained with 0.8  $\mu$ g CoraLite® Plus 647 Anti-Human Hemoglobin Epsilon (CL647-12361)(red), or 0.8  $\mu$ g CoraLite® Plus 647-conjugated Rabbit IgG control Rabbit PolyAb (CL647-30000) (blue). Cells were fixed with 4% PFA and permeabilized with Flow Cytometry Perm Buffer (PF00011-C).