

For Research Use Only

CoraLite® Plus 647-conjugated PKC Beta Polyclonal antibody



Catalog Number: **CL647-12919**

Basic Information

Catalog Number: CL647-12919	GenBank Accession Number: BC036472	Purification Method: Antigen affinity purification
Size: 100ul , Concentration: 1000 µg/ml by Nanodrop;	GeneID (NCBI): 5579	Excitation/Emission maxima wavelengths: 654 nm / 674 nm
Source: Rabbit	UNIPROT ID: P05771	
Isotype: IgG	Full Name: protein kinase C, beta	
Immunogen Catalog Number: AG3591	Calculated MW: 673 aa, 77 kDa	
	Observed MW: 77 kDa	

Applications

Tested Applications:
FC (Intra)

Species Specificity:
human

Background Information

Protein kinase C (PKC) is a family of serine- and threonine-specific protein kinases that can be activated by calcium and second messenger diacylglycerol. Protein kinase Cs (PKCs) are signaling molecules that play key roles in many cellular processes, including secretion, gene expression, proliferation, and muscle contraction. The PKC family is broadly divided into three subgroups: classical, novel, and atypical PKCs. These subgroups differ in both protein sequences and mechanistic requirements for catalytic activity. PKC beta is one of the PKC family members. PKC beta has been reported to be involved in many different cellular functions, such as B cell activation, apoptosis induction, endothelial cell proliferation, and intestinal sugar absorption. Studies in mice also suggest that this kinase may also regulate neuronal functions and correlate fear-induced conflict behavior after stress. This antibody can recognize PKC beta, PKC alpha, PKC gamma, PKC epsilon and PKC delta.

Storage

Storage:
Store at -20°C. Avoid exposure to light. Stable for one year after shipment.

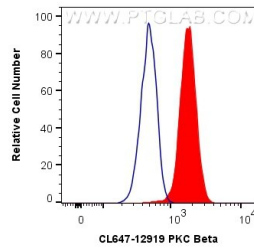
Storage Buffer:
PBS with 50% Glycerol, 0.05% Proclin300, 0.5% BSA, pH 7.3.

Aliquoting is unnecessary for -20°C storage

For technical support and original validation data for this product please contact:
T: 1 (888) 4PTGLAB (1-888-478-4522) (toll free in USA), or 1(312) 455-8498 (outside USA)
E: proteintech@ptglab.com
W: ptglab.com

This product is exclusively available under Proteintech Group brand and is not available to purchase from any other manufacturer.

Selected Validation Data



1×10^6 K-562 cells were intracellularly stained with 0.4 μ g CoraLite® Plus 647 Anti-Human PKC Beta (CL647-12919) (red), or 0.4 μ g CoraLite® Plus 647-conjugated Rabbit IgG control Rabbit PolyAb (CL647-30000, Clone:) (blue). Cells were fixed with 4% PFA and permeabilized with Flow Cytometry Perm Buffer (PF00011-C).