

CoraLite® Plus 647-conjugated PPP3CA Polyclonal antibody

Catalog Number: **CL647-13422**

Basic Information

Catalog Number:

CL647-13422

Size:

100ul , Concentration: 1000 µg/ml by
Nanodrop;

Source:

Rabbit

Isotype:

IgG

Immunogen Catalog Number:

AG4203

GenBank Accession Number:

BC025714

GeneID (NCBI):

5530

UNIPROT ID:

Q08209

Full Name:

protein phosphatase 3 (formerly 2B),
catalytic subunit, alpha isoform

Calculated MW:

59 kDa

Observed MW:

59 kDa

Purification Method:

Antigen affinity purification

**Excitation/Emission maxima
wavelengths:**

654 nm / 674 nm

Applications

Tested Applications:

FC (Intra)

Species Specificity:

human, mouse

Background Information

PPP3CA, also called calcineurin A α , is the only serine/threonine protein phosphatase under the control of Ca²⁺/calmodulin, and plays a critical role in the coupling of Ca²⁺ signals to cellular responses. Ca²⁺ signaling plays a central role in hypertrophic growth of cardiac and skeletal muscle in response to mechanical load and a variety of signals. Therefore, PPP3CA plays an important role in muscle differentiation, especially in muscle fiber type conversion. It is also involved in osteoclast regulation, regulating bone formation through an effect on osteoblast differentiation.

Storage

Storage:

Store at -20°C. Avoid exposure to light. Stable for one year after shipment.

Storage Buffer:

PBS with 50% Glycerol, 0.05% Proclin300, 0.5% BSA, pH 7.3.

Aliquoting is unnecessary for -20°C storage

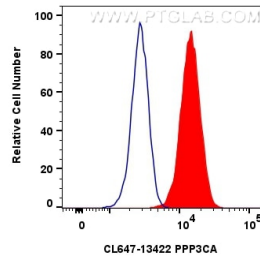
For technical support and original validation data for this product please contact:

T: 1 (888) 4PTGLAB (1-888-478-4522) (toll free
in USA), or 1(312) 455-8498 (outside USA)

E: proteintech@ptglab.com
W: ptglab.com

This product is exclusively available under Proteintech Group brand and is not available to purchase from any other manufacturer.

Selected Validation Data



1x10⁶ HeLa cells were intracellularly stained with 0.8 ug CoraLite® Plus 647-conjugated PPP3CA Polyclonal antibody (CL647-13422)(red), or 0.8 ug CoraLite® Plus 647-conjugated Rabbit IgG control Rabbit PolyAb (CL647-30000) (blue). Cells were fixed with 4% PFA and permeabilized with Flow Cytometry Perm Buffer (PF00011-C).