

For Research Use Only

CoraLite® Plus 647-conjugated LDHB Polyclonal antibody

Catalog Number: CL647-14824

Featured Product



Basic Information

Catalog Number:

CL647-14824

Size:

100ul , Concentration: 1000 µg/ml by Nanodrop;

Source:

Rabbit

Isotype:

IgG

Immunogen Catalog Number:

AG6605

GenBank Accession Number:

BC002362

GeneID (NCBI):

3945

UNIPROT ID:

P07195

Full Name:

lactate dehydrogenase B

Calculated MW:

36 kDa

Observed MW:

35 kDa

Purification Method:

Antigen affinity purification

Recommended Dilutions:

IF/ICC: 1:50-1:500

FC (Intra): 0.20 ug per 10⁶ cells in a 100 µl suspension

Excitation/Emission maxima wavelengths:

654 nm / 674 nm

Applications

Tested Applications:

IF/ICC, FC (Intra)

Species Specificity:

human, mouse, rat

Positive Controls:

IF/ICC : HeLa cells,

FC (Intra) : HeLa cells,

Background Information

LDHB, also named as LDH-H and NY-REN-46, belongs to the LDH/MDH superfamily. And LDH family. It is an enzyme which catalyzes the reversible conversion of pyruvate and NADH to lactate and NAD⁺ in the glycolytic pathway (PMID: 26269128). It is glycolytic enzymes and it is positively regulated by mTOR.

Storage

Storage:

Store at -20°C. Avoid exposure to light. Stable for one year after shipment.

Storage Buffer:

PBS with 50% glycerol, 0.05% Proclin300, 0.5% BSA, pH7.3

Aliquoting is unnecessary for -20°C storage

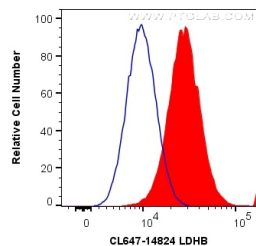
For technical support and original validation data for this product please contact:

T: 1 (888) 4PTGLAB (1-888-478-4522) (toll free in USA), or 1(312) 455-8498 (outside USA)

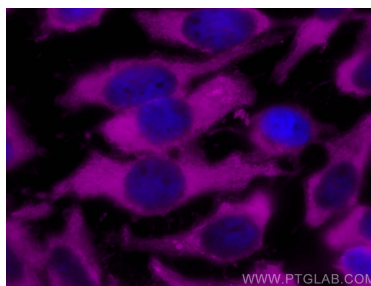
E: proteintech@ptglab.com
W: ptglab.com

This product is exclusively available under Proteintech Group brand and is not available to purchase from any other manufacturer.

Selected Validation Data



1X10⁶ HeLa cells were intracellularly stained with 0.2 ug Coralite® Plus 647 Anti-Human LDHB (CL647-14824) (red), or 0.2 ug Control Antibody (blue). Cells were fixed with 4% PFA and permeabilized with Flow Cytometry Perm Buffer (PF00011-C).



Immunofluorescent analysis of (-20°C Methanol) fixed HeLa cells using Coralite® Plus 647 LDHB antibody (CL647-14824) at dilution of 1:100.