

For Research Use Only



# CoraLite® Plus 647-conjugated Thymidylate synthase Polyclonal antibody

Catalog Number: **CL647-15047**

Featured Product

## Basic Information

Catalog Number:

CL647-15047

Size:

100ul , Concentration: 1000 µg/ml by Nanodrop;

Source:

Rabbit

Isotype:

IgG

Immunogen Catalog Number:

AG7027

GenBank Accession Number:

BC002567

GeneID (NCBI):

7298

UNIPROT ID:

P04818

Full Name:

thymidylate synthetase

Calculated MW:

36 kDa

Observed MW:

32-36 kDa

Purification Method:

Antigen affinity purification

Recommended Dilutions:

IF/ICC: 1:50-1:500

FC (Intra): 0.40 ug per 10<sup>6</sup> cells in a 100 µl suspension

Excitation/Emission maxima wavelengths:

654 nm / 674 nm

## Applications

Tested Applications:

IF/ICC, FC (Intra)

Species Specificity:

human, mouse, rat

Positive Controls:

IF/ICC : HeLa cells,

FC (Intra) : HeLa cells,

## Background Information

Thymidylate synthase gene (TYMS) encodes thymidylate synthase (TS) which is an important factor in the growth of tumor cells. TS can catalyze the transformation of intracellular uridine monophosphate (UMP) into dTMP which is required for DNA replication and repairing. TS is a key enzyme in the process of cell proliferation, also is the important target enzymes of 5-FU and other chemotherapy drugs. The expression of TYMS is negatively correlated with the efficacy of chemotherapy and the prognosis of patients who suffer from rectal cancer, breast cancer, colorectal cancer, gastric cancer, head and neck cancer, esophageal cancer, pancreatic cancer and so on.

## Storage

Storage:

Store at -20°C. Avoid exposure to light. Stable for one year after shipment.

Storage Buffer:

PBS with 50% glycerol, 0.05% Proclin300, 0.5% BSA, pH7.3

Aliquoting is unnecessary for -20°C storage

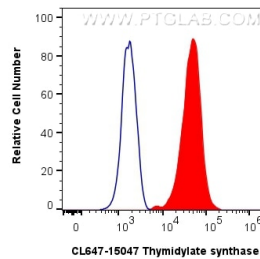
For technical support and original validation data for this product please contact:

T: 1 (888) 4PTGLAB (1-888-478-4522) (toll free in USA), or 1(312) 455-8498 (outside USA)

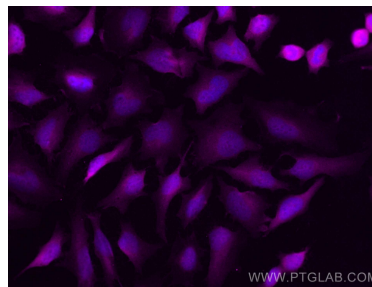
E: [proteintech@ptglab.com](mailto:proteintech@ptglab.com)  
W: [ptglab.com](http://ptglab.com)

This product is exclusively available under Proteintech Group brand and is not available to purchase from any other manufacturer.

## Selected Validation Data



$1 \times 10^6$  HeLa cells were intracellularly stained with 0.4  $\mu$ g CoraLite® Plus 647 Anti-Human Thymidylate synthase (CL647-15047) (red), or 0.4  $\mu$ g CoraLite® Plus 647-conjugated Rabbit IgG control Rabbit PolyAb (CL647-30000) (blue). Cells were fixed with 4% PFA and permeabilized with Flow Cytometry Perm Buffer (PF00011-C).



Immunofluorescent analysis of (4% PFA) fixed HeLa cells using CoraLite® Plus 647 Thymidylate synthase antibody (CL647-15047) at dilution of 1:200.