

For Research Use Only

CoraLite® Plus 647-conjugated KAP1 Polyclonal antibody



Catalog Number: CL647-15202

Featured Product

Basic Information

Catalog Number:

CL647-15202

Size:

100ul , Concentration: 1000 µg/ml by Nanodrop;

Source:

Rabbit

Isotype:

IgG

Immunogen Catalog Number:

AG7350

GenBank Accession Number:

BC004978

GeneID (NCBI):

10155

UNIPROT ID:

Q13263

Full Name:

tripartite motif-containing 28

Calculated MW:

89 kDa

Observed MW:

100 kDa

Purification Method:

Antigen affinity purification

Recommended Dilutions:

IF/ICC 1:50-1:500

Excitation/Emission maxima wavelengths:

654 nm / 674 nm

Applications

Tested Applications:

IF/ICC, FC (Intra)

Species Specificity:

human

Positive Controls:

IF/ICC : HeLa cells,

Background Information

KAP1, also named as TRIM28 or RNF96, is a 835 amino acid protein, which contain one RING-type zinc finger, one PHD-type zinc finger, one bromo domain and two B box-type zinc fingers. KAP1 localizes in the nucleus and belongs to the TRIM/RBCC family. KAP1 is a nuclear corepressor for KRAB domain-containing zinc finger proteins and mediates gene silencing by recruiting CHD3, a subunit of the nucleosome remodeling and deacetylation (NuRD) complex, and SETDB1 to the promoter regions of KRAB target genes. KAP1 is expressed in all tissues tested including spleen, thymus, prostate, testis, ovary, small intestine, colon and peripheral blood leukocytes. The calculated molecular weight of KAP1 is 89 kDa, but modified KAP1 is about 100 kDa. (PMID: 18590578)

Storage

Storage:

Store at -20°C. Avoid exposure to light. Stable for one year after shipment.

Storage Buffer:

PBS with 50% Glycerol, 0.05% Proclin300, 0.5% BSA, pH 7.3.

Aliquoting is unnecessary for -20°C storage

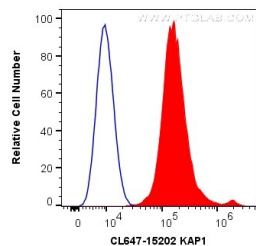
For technical support and original validation data for this product please contact:

T: 1 (888) 4PTGLAB (1-888-478-4522) (toll free in USA), or 1(312) 455-8498 (outside USA)

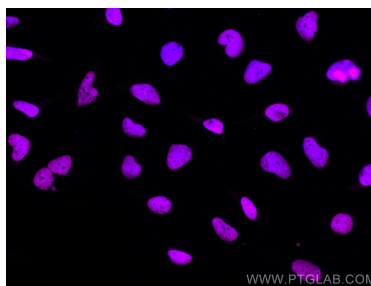
E: proteintech@ptglab.com
W: ptglab.com

This product is exclusively available under Proteintech Group brand and is not available to purchase from any other manufacturer.

Selected Validation Data



1X10⁶ HeLa cells were intracellularly stained with 0.2 ug CoraLite® Plus 647 Anti-Human KAP1 (CL647-15202) (red), or 0.2 ug Isotype Control (blue). Cells were fixed with 4% PFA and permeabilized with Flow Cytometry Perm Buffer (PF00011-C).



Immunofluorescent analysis of (4% PFA) fixed HeLa cells using CoraLite® Plus 647 KAP1 antibody (CL647-15202) at dilution of 1:200.