

For Research Use Only

CoraLite® Plus 647-conjugated GSTP1 Polyclonal antibody

Catalog Number: CL647-15902

Featured Product



Basic Information

Catalog Number:

CL647-15902

Size:

100ul, Concentration: 1000 µg/ml by Nanodrop;

Source:

Rabbit

Isotype:

IgG

Immunogen Catalog Number:

AG8731

GenBank Accession Number:

BC010915

GeneID (NCBI):

2950

UNIPROT ID:

P09211

Full Name:

glutathione S-transferase pi 1

Calculated MW:

210 aa, 23 kDa

Observed MW:

23-28 kDa

Purification Method:

Antigen affinity purification

Recommended Dilutions:

IF/ICC 1:50-1:500

Excitation/Emission maxima wavelengths:

654 nm / 674 nm

Applications

Tested Applications:

IF/ICC, FC (Intra)

Species Specificity:

human, mouse, rat

Positive Controls:

IF/ICC : HepG2 cells,

Background Information

Glutathione S-transferase P (GSTP1) conjugates reduced glutathione to a wide number of exogenous and endogenous hydrophobic electrophiles. It is involved in the formation of glutathione conjugates of both prostaglandin A2 (PGA2) and prostaglandin J2 (PGJ2) (PubMed:9084911). Participates in the formation of novel hepxilin regioisomers (PubMed:21046276).

Storage

Storage:

Store at -20°C. Avoid exposure to light. Stable for one year after shipment.

Storage Buffer:

PBS with 50% Glycerol, 0.05% Proclin300, 0.5% BSA, pH 7.3.

Aliquoting is unnecessary for -20°C storage

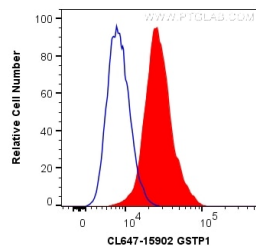
For technical support and original validation data for this product please contact:

T: 1 (888) 4PTGLAB (1-888-478-4522) (toll free in USA), or 1(312) 455-8498 (outside USA)

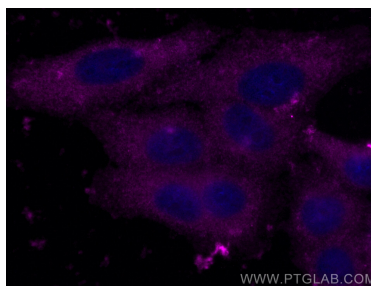
E: proteintech@ptglab.com
W: ptglab.com

This product is exclusively available under Proteintech Group brand and is not available to purchase from any other manufacturer.

Selected Validation Data



1X10⁶ HepG2 cells were intracellularly stained with 0.2 ug CoraLite® Plus 647 Anti-Human GSTP1 (CL647-15902) (red), or 0.2 ug Rabbit IgG CL647 (blue). Cells were fixed with 4% PFA and permeabilized with Flow Cytometry Perm Buffer (PF00011-C).



Immunofluorescent analysis of (-20°C Ethanol) fixed HepG2 cells using CoraLite® Plus 647 GSTP1 antibody (CL647-15902) at dilution of 1:200.