

For Research Use Only

# CoraLite® Plus 647-conjugated CISD1 Polyclonal antibody



Catalog Number: CL647-16006

Featured Product

## Basic Information

Catalog Number:

CL647-16006

GenBank Accession Number:

BC007043

Purification Method:

Antigen affinity purification

Size:

100ul , Concentration: 1000 µg/ml by  
Nanodrop;

GeneID (NCBI):

55847

Excitation/Emission maxima  
wavelengths:

654 nm / 674 nm

Source:

Rabbit

UNIPROT ID:

Q9NZ45

Full Name:

CDGSH iron sulfur domain 1

Isotype:

IgG

Calculated MW:

108 aa, 12 kDa

Immunogen Catalog Number:

AG8680

Observed MW:

14-17 kDa

## Applications

Tested Applications:

FC (Intra)

Species Specificity:

human, mouse, rat

## Background Information

MitoNEET, also named CISD1, belongs to a previously uncharacterized ancient family of proteins for which the hallmark is the presence of a unique 39 amino acid CDGSH domain. It is a single-pass type III membrane protein, located in mitochondrion outer membrane and may play a role in regulating maximal capacity for electron transport and oxidative phosphorylation. MitoNEET is a recently identified drug target for a commonly prescribed diabetes drug, Pioglitazone. This antibody recognizing MitoNEET (calculated 12 kDa) as a 17 kDa protein may be due to its posttranslational modification or metal binding activity.

## Storage

Storage:

Store at -20°C. Avoid exposure to light. Stable for one year after shipment.

Storage Buffer:

PBS with 50% Glycerol, 0.05% Proclin300, 0.5% BSA, pH 7.3.

Aliquoting is unnecessary for -20°C storage

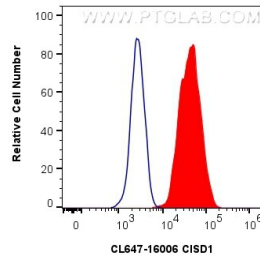
For technical support and original validation data for this product please contact:

T: 1 (888) 4PTGLAB (1-888-478-4522) (toll free  
in USA), or 1(312) 455-8498 (outside USA)

E: [proteintech@ptglab.com](mailto:proteintech@ptglab.com)  
W: [ptglab.com](http://ptglab.com)

This product is exclusively available under Proteintech Group brand and is not available to purchase from any other manufacturer.

## Selected Validation Data



1X10<sup>6</sup> HeLa cells were intracellularly stained with 0.8 ug CoraLite® Plus 647 Anti-Human C1SD1 (CL647-16006) and HRP-conjugated polymer at dilution 1:1000 (red), or 0.8 ug CoraLite® Plus 647-conjugated Rabbit IgG control Rabbit PolyAb (CL647-30000, Clone: ) (blue). Cells were fixed with 4% PFA and permeabilized with Flow Cytometry Perm Buffer (PF00011-C).