

For Research Use Only



CoraLite® Plus 647-conjugated Cytokeratin 17-Specific Polyclonal antibody

Catalog Number: **CL647-17516**

Featured Product

Basic Information

Catalog Number:
CL647-17516

Size:
100ul , Concentration: 1000 µg/ml by Nanodrop;

Source:
Rabbit

Isotype:
IgG

GenBank Accession Number:
NM_000422

GeneID (NCBI):
3872

UNIPROT ID:
Q04695

Full Name:
keratin 17

Calculated MW:
48 kDa

Observed MW:
48 kDa

Purification Method:
Antigen affinity purification

Recommended Dilutions:
IF/ICC 1:50-1:500

Excitation/Emission maxima wavelengths:
654 nm / 674 nm

Applications

Tested Applications:
IF, FC (Intra)

Species Specificity:
human, mouse

Positive Controls:

IF/ICC : HeLa cells,

Background Information

Keratins are a large family of proteins that form the intermediate filament cytoskeleton of epithelial cells, which are classified into two major sequence types. Type I keratins are a group of acidic intermediate filament proteins, including K9-K23, and the hair keratins Ha1-Ha8. Type II keratins are the basic or neutral counterparts to the acidic type I keratins, including K1-K8, and the hair keratins, Hb1-Hb6. Keratin 17 is a type I cytokeratin. It is found in nail beds, hair follicles, sebaceous glands, and other epidermal appendages. It is used as a marker for trauma. This antibody is specifically against KRT17.

Storage

Storage:

Store at -20°C. Avoid exposure to light. Stable for one year after shipment.

Storage Buffer:

PBS with 50% Glycerol, 0.05% Proclin300, 0.5% BSA, pH 7.3.

Aliquoting is unnecessary for -20°C storage

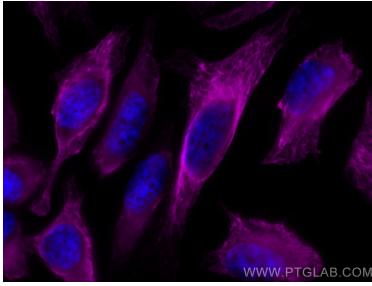
For technical support and original validation data for this product please contact:

T: 1 (888) 4PTGLAB (1-888-478-4522) (toll free in USA), or 1(312) 455-8498 (outside USA)

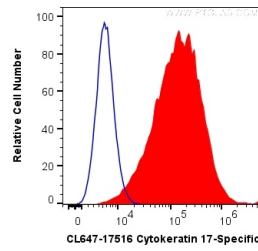
E: proteintech@ptglab.com
W: ptglab.com

This product is exclusively available under Proteintech Group brand and is not available to purchase from any other manufacturer.

Selected Validation Data



Immunofluorescent analysis of (-20°C Methanol) fixed HeLa cells using CoraLite® Plus 647 Cytokeratin 17-Specific antibody (CL647-17516) at dilution of 1:200.



1X10⁶ HeLa cells were intracellularly stained with 0.2 ug CoraLite® Plus 647 Anti-Human Cytokeratin 17-Specific (CL647-17516) (red), or 0.2 ug Control Antibody (blue). Cells were fixed with 4% PFA and permeabilized with Flow Cytometry Perm Buffer (PF00011-C).