

For Research Use Only

CoraLite® Plus 647-conjugated IGF2R-Specific Polyclonal antibody



Catalog Number: **CL647-20253**

Basic Information

Catalog Number: CL647-20253	GenBank Accession Number: NM_000876	Purification Method: Antigen affinity purification
Size: 100ul , Concentration: 1000 µg/ml by Nanodrop;	GeneID (NCBI): 3482	Excitation/Emission maxima wavelengths: 654 nm / 674 nm
Source: Rabbit	Full Name: insulin-like growth factor 2 receptor	
Isotype: IgG	Calculated MW: 274 kDa	
	Observed MW: 300 kDa	

Applications

Tested Applications:
FC

Species Specificity:
human

Background Information

IGF2R, also named as MPRI, CI Man-6-P receptor, CI-MPR, M6PR, IGF-II receptor, M6P/IGF2R, MPR 300 and CD222, belongs to the MRL1/IGF2R family. IGF2R transports of phosphorylated lysosomal enzymes from the Golgi complex and the cell surface to lysosomes. IGF2R is a lysosomal enzymes bearing phosphomannosyl residues bind specifically to mannose-6-phosphate receptors in the Golgi apparatus and the resulting receptor-ligand complex is transported to an acidic prelysosomal compartment where the low pH mediates the dissociation of the complex. This receptor also binds IGF2. IGF2R acts as a positive regulator of T-cell coactivation, by binding DPP4. The antibody is specific to IGF2R.

Storage

Storage:
Store at -20°C. Avoid exposure to light. Stable for one year after shipment.

Storage Buffer:
PBS with 50% Glycerol, 0.05% Proclin300, 0.5% BSA, pH 7.3.

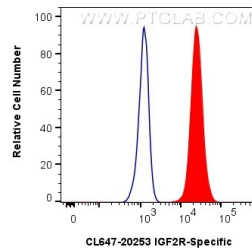
Aliquoting is unnecessary for -20°C storage

*** 20ul sizes contain 0.1% BSA

For technical support and original validation data for this product please contact:
T: 1 (888) 4PTGLAB (1-888-478-4522) (toll free in USA), or 1(312) 455-8498 (outside USA)
E: proteintech@ptglab.com
W: ptglab.com

This product is exclusively available under Proteintech Group brand and is not available to purchase from any other manufacturer.

Selected Validation Data



1X10⁶ HepG2 cells were intracellularly stained with 0.8 ug CoraLite® Plus 647 Anti-Human IGF2R-Specific (CL647-20253) (red), or 0.8 ug CoraLite® Plus 647-conjugated Rabbit IgG control Rabbit PolyAb (CL647-30000, Clone:) (blue). Cells were fixed with 4% PFA and permeabilized with Flow Cytometry Perm Buffer (PF00011-C).