

For Research Use Only

# CoraLite® Plus 647-conjugated MIF Polyclonal antibody



Catalog Number: **CL647-20415**

Featured Product

## Basic Information

Catalog Number:

CL647-20415

Size:

100ul , Concentration: 1000 µg/ml by Nanodrop;

Source:

Rabbit

Isotype:

IgG

Immunogen Catalog Number:

AG14058

GenBank Accession Number:

BC000447

GeneID (NCBI):

4282

UNIPROT ID:

P14174

Full Name:

macrophage migration inhibitory factor (glycosylation-inhibiting factor)

Calculated MW:

115 aa, 12 kDa

Observed MW:

12 kDa

Purification Method:

Antigen affinity purification

Excitation/Emission maxima wavelengths:

654 nm / 674 nm

## Applications

Tested Applications:

FC (Intra)

Species Specificity:

human, rat, mouse

## Storage

Storage:

Store at -20°C. Avoid exposure to light. Stable for one year after shipment.

Storage Buffer:

PBS with 50% Glycerol, 0.05% Proclin300, 0.5% BSA, pH 7.3.

Aliquoting is unnecessary for -20°C storage

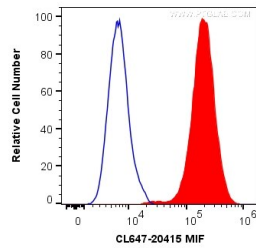
For technical support and original validation data for this product please contact:

T: 1 (888) 4PTGLAB (1-888-478-4522) (toll free in USA), or 1(312) 455-8498 (outside USA)

E: [proteintech@ptglab.com](mailto:proteintech@ptglab.com)  
W: [ptglab.com](http://ptglab.com)

This product is exclusively available under Proteintech Group brand and is not available to purchase from any other manufacturer.

## Selected Validation Data



$1 \times 10^6$  A549 cells were intracellularly stained with 0.2  $\mu$ g CoraLite® Plus 647 Anti-Human MIF (CL647-20415) (red), or 0.2  $\mu$ g CL647-30000 Rabbit IgG (blue). Cells were fixed with 4% PFA and permeabilized with Flow Cytometry Perm Buffer (PF00011-C).