

For Research Use Only

CoraLite® Plus 647-conjugated HIF-1 alpha Polyclonal antibody

Catalog Number: CL647-20960

Featured Product



Basic Information

Catalog Number:

CL647-20960

Size:

100ul, Concentration: 1000 µg/ml by Nanodrop;

Source:

Rabbit

Isotype:

IgG

Immunogen Catalog Number:

AG15198

GenBank Accession Number:

BC012527

GeneID (NCBI):

3091

UNIPROT ID:

Q16665

Full Name:

hypoxia inducible factor 1, alpha subunit (basic helix-loop-helix transcription factor)

Calculated MW:

826 aa, 93 kDa

Observed MW:

120 kDa

Purification Method:

Antigen affinity purification

Recommended Dilutions:

IF/ICC 1:50-1:500

Excitation/Emission maxima wavelengths:

654 nm / 674 nm

Applications

Tested Applications:

IF/ICC, FC (Intra)

Species Specificity:

human

Positive Controls:

IF/ICC : Cobalt Chloride treated HeLa cells,

Background Information

HIF1a, the major regulator of the cellular responses to hypoxia, consists of an oxygen-sensitive subunit, HIF1 alpha (HIF1A), and an oxygen-insensitive subunit, HIF1 beta (arylhydrocarbon receptor nuclear transporter [ARNT]). Under normal oxygen conditions, HIF1a is continuously produced and destroyed, in a process involving hydroxylation, interaction with von Hippel-Lindau (VHL) protein, polyubiquitylation and subsequent proteasomal degradation. Under hypoxic conditions, hydroxylation is impaired and HIF1a is stabilized. HIF1a localizes in cytoplasm in normoxia, but it can translocate into nuclear in response to hypoxia. The calculated molecular weight of HIF1a is 93 kDa, but the modified protein HIF1a is about 110-120kDa (PMID: 11698256, PMID: 7539918).

Storage

Storage:

Store at -20°C. Avoid exposure to light. Stable for one year after shipment.

Storage Buffer:

PBS with 50% Glycerol, 0.05% Proclin300, 0.5% BSA, pH 7.3.

Aliquoting is unnecessary for -20°C storage

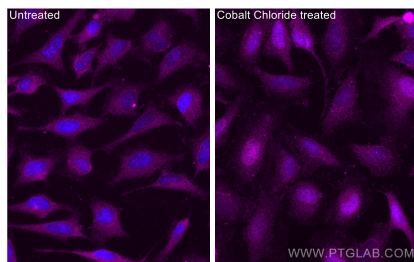
For technical support and original validation data for this product please contact:

T: 1 (888) 4PTGLAB (1-888-478-4522) (toll free in USA), or 1(312) 455-8498 (outside USA)

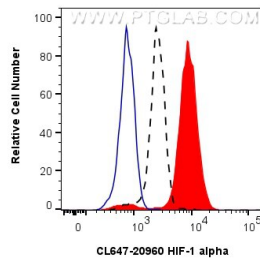
E: proteintech@ptglab.com
W: ptglab.com

This product is exclusively available under Proteintech Group brand and is not available to purchase from any other manufacturer.

Selected Validation Data



Immunofluorescent analysis of (-20°C Ethanol) fixed Cobalt Chloride treated HeLa cells using CoraLite® Plus 647 HIF-1 alpha antibody (CL647-20960) at dilution of 1:200.



1x10⁶ HeLa cells untreated (dashed lines) or treated with Cobalt Chloride (red) were intracellularly stained with 0.25 ug CoraLite® Plus 647-conjugated HIF-1 alpha Polyclonal antibody (CL647-20960), or 0.25 ug CoraLite® Plus 647-conjugated Rabbit IgG control Rabbit PolyAb (CL647-30000) (blue). Cells were fixed with 4% PFA and permeabilized with 90% MeOH.