

For Research Use Only

CoraLite® Plus 647-conjugated GDI2 Monoclonal antibody

Catalog Number: CL647-60078



Basic Information

Catalog Number: CL647-60078	GenBank Accession Number: BC005145	Purification Method: Protein G purification
Size: 100ul , Concentration: 1000 ug/ml by Nanodrop;	GeneID (NCBI): 2665	CloneNo.: 4B8F3
Source: Mouse	UNIPROT ID: P50395	Recommended Dilutions: IF/ICC 1:200-1:800
Isotype: IgG1	Full Name: GDP dissociation inhibitor 2	Excitation/Emission maxima wavelengths: 654 nm / 674 nm
Immunogen Catalog Number: AG4613	Calculated MW: 47 kDa	
	Observed MW: 46 kDa	

Applications

Tested Applications: IF/ICC	Positive Controls: IF/ICC : HeLa cells,
Species Specificity: human, mouse	

Background Information

GDP dissociation inhibitors (GDIs) are proteins that regulate the GDP-GTP exchange reaction of members of the rab family, GDIs can bind and release GDP-bound Rab proteins from membranes. Two GDI proteins towards different Rab proteins have been identified. GDI1 interacts with almost all of the Rab proteins, while GDI2 interacts with Rab11 but not Rab3A. GDI2 distributes ubiquitously, displaying a membrane bound location in perinuclear regions of cells. GDI-2 was thought to be involved in cellular response to insulin. It electrophoreses as a 46kd protein in SDS-PAGE. (PMID: 7929030; PMID: 19570034). This antibody can bind both GDIs for the close sequences.

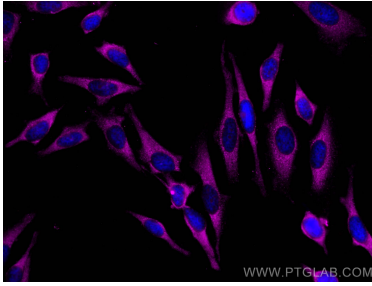
Storage

Storage:
Store at -20°C. Avoid exposure to light. Stable for one year after shipment.
Storage Buffer:
PBS with 50% Glycerol, 0.05% Proclin300, 0.5% BSA, pH 7.3.
Aliquoting is unnecessary for -20°C storage

For technical support and original validation data for this product please contact:
T: 1 (888) 4PTGLAB (1-888-478-4522) (toll free in USA), or 1(312) 455-8498 (outside USA)
E: proteintech@ptglab.com
W: ptglab.com

This product is exclusively available under Proteintech Group brand and is not available to purchase from any other manufacturer.

Selected Validation Data



Immunofluorescent analysis of (-20°C Methanol) fixed HeLa cells using Coralite® Plus 647 GDI2 antibody (CL647-60078, Clone: 4B8F3) at dilution of 1:400.