

For Research Use Only

CoraLite® Plus 647-conjugated Chromogranin A Monoclonal antibody

Catalog Number: CL647-60135



Basic Information

Catalog Number: CL647-60135	GenBank Accession Number: BC006459	Purification Method: Protein G purification
Size: 100ul , Concentration: 1000 ug/ml by Nanodrop;	GeneID (NCBI): 1113	CloneNo.: 3H11C11
Source: Mouse	UNIPROT ID: P10645	Recommended Dilutions: IF/ICC 1:50-1:500
Isotype: IgG1	Full Name: chromogranin A (parathyroid secretory protein 1)	Excitation/Emission maxima wavelengths: 654 nm / 674 nm
Immunogen Catalog Number: AG0807	Calculated MW: 51 kDa	

Applications

Tested Applications: IF/ICC, FC (Intra)	Positive Controls: IF/ICC : PC-12 cells, SH-SY5Y cells
Species Specificity: human, mouse, rat, pig	

Background Information

Chromogranin A is a member of the granin family of neuroendocrine secretory proteins. It is located in secretory vesicles of neurons and endocrine cells. Chromogranin A is the precursor to several functional peptides including vasostatin, pancreastatin, catestatin and parastatin. These peptides negatively modulate the neuroendocrine function of the releasing cell (autocrine) or nearby cells (paracrine). CgA is one of the most used tumor markers in NET's (neuroendocrine tumors), and elevated CgA concentrations have been demonstrated in serum or plasma of patients with different types of these tumors.

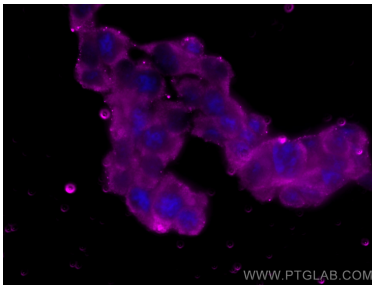
Storage

Storage:
Store at -20°C. Avoid exposure to light. Stable for one year after shipment.
Storage Buffer:
PBS with 50% Glycerol, 0.05% Proclin300, 0.5% BSA, pH 7.3.
Aliquoting is unnecessary for -20°C storage

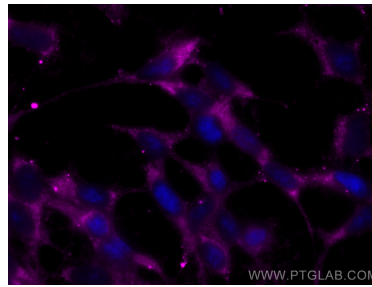
For technical support and original validation data for this product please contact:
T: 1 (888) 4PTGLAB (1-888-478-4522) (toll free in USA), or 1(312) 455-8498 (outside USA)
E: proteintech@ptglab.com
W: ptglab.com

This product is exclusively available under Proteintech Group brand and is not available to purchase from any other manufacturer.

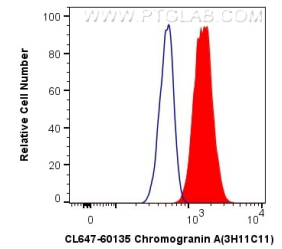
Selected Validation Data



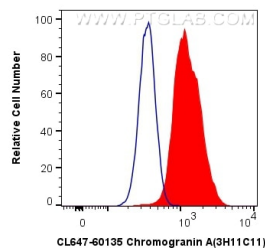
Immunofluorescent analysis of (-20°C Ethanol) fixed PC-12 cells using CoraLite® Plus 647 Chromogranin A antibody (CL647-60135, Clone: 3H11C11) at dilution of 1:200.



Immunofluorescent analysis of (-20°C Ethanol) fixed SH-SY5Y cells using CoraLite® Plus 647 Chromogranin A antibody (CL647-60135, Clone: 3H11C11) at dilution of 1:200.



1X10⁶ Neuro-2a cells were intracellularly stained with 0.8 ug CoraLite® Plus 647 Anti-Human Chromogranin A (CL647-60135, Clone:3H11C11) (red), or 0.8 ug Control Antibody. Cells were fixed with 4% PFA and permeabilized with Flow Cytometry Perm Buffer (PF00011-C).



1X10⁶ SH-SY5Y cells were intracellularly stained with 0.8 ug CoraLite® Plus 647 Anti-Human Chromogranin A (CL647-60135, Clone:3H11C11) (red), or 0.8 ug Control Antibody. Cells were fixed with 4% PFA and permeabilized with Flow Cytometry Perm Buffer (PF00011-C).