

For Research Use Only

# CoraLite®647-conjugated Anti-Mouse CD107a (1D4B)



Catalog Number: CL647-65050

## Basic Information

<b>Catalog Number:</b> CL647-65050	<b>GenBank Accession Number:</b> BC006785	<b>Purification Method:</b> Affinity purification
<b>Size:</b> 100tests , 5 µl/test	<b>GeneID (NCBI):</b> 16783	<b>CloneNo.:</b> 1D4B
<b>Source:</b> Rat	<b>Full Name:</b> lysosomal-associated membrane protein 1	<b>Recommended Dilutions:</b> IF 1:50-1:500
<b>Isotype:</b> IgG2a		<b>Excitation/Emission maxima wavelengths:</b> 650 nm/665 nm

## Applications

<b>Tested Applications:</b> FC, IF	<b>Positive Controls:</b> IF : NIH/3T3 cells,
<b>Species Specificity:</b> Mouse	

## Background Information

LAMP1 (CD107a) is a heavily glycosylated membrane protein enriched in the lysosomal membrane. LAMP1 is extensively glycosylated with asparagine-linked oligosaccharides which protect it from intracellular proteolysis (PMID: 10521503). Although LAMP1 is expressed largely in the endosome-lysosomal membrane of cells, it is also found on the plasma membrane (PMID: 16168398). Elevated LAMP1 expression at the cell surface has also been detected during platelet and granulocytic cell activation, as well as in some tumor cells (PMID: 29085473). LAMP1 functions to provide selectins with carbohydrate ligands. This protein has also been shown to be a marker of degranulation on lymphocytes such as CD8+ and NK cells and may also play a role in tumor cell differentiation and metastasis (PMID: 18835598; 29085473; 9426697).

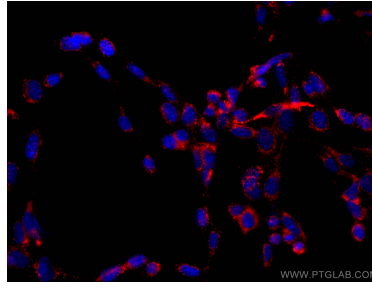
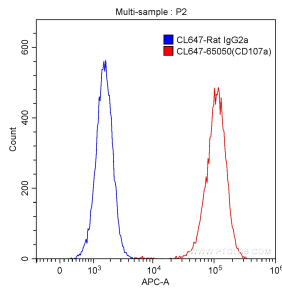
## Storage

**Storage:**  
Store at 2-8°C. Avoid exposure to light.  
**Storage Buffer:**  
PBS with 0.1% sodium azide and 0.5% BSA, pH 7.3.

For technical support and original validation data for this product please contact:  
T: 1 (888) 4PTGLAB (1-888-478-4522) (toll free in USA), or 1(312) 455-8498 (outside USA)      E: proteintech@ptglab.com  
W: ptglab.com

This product is exclusively available under Proteintech Group brand and is not available to purchase from any other manufacturer.

## Selected Validation Data



1X10<sup>6</sup> NIH/3T3 cells were intracellularly stained with 5.00 ul CoraLite®647-conjugated Anti-Mouse CD107a (CL647-65050, Clone: 1D4B) (red) or isotype control antibody (blue). Cells were fixed with 90% MeOH.

Immunofluorescent analysis of (-20°C Ethanol) fixed NIH/3T3 cells using CoraLite®647 CD107a antibody (CL647-65050, Clone: 1D4B) at dilution of 1:400.