

For Research Use Only

# CoraLite®647-conjugated Anti-Human CD38 (HB7)



Catalog Number: CL647-65107

## Basic Information

<b>Catalog Number:</b> CL647-65107	<b>GenBank Accession Number:</b> BC007964	<b>Purification Method:</b> Affinity purification
<b>Size:</b> 100tests , 5 µl/test	<b>GeneID (NCBI):</b> 952	<b>CloneNo.:</b> HB7
<b>Source:</b> Mouse	<b>Full Name:</b> CD38 molecule	<b>Excitation/Emission maxima wavelengths:</b> 650 nm/665 nm
<b>Isotype:</b> Mouse IgG1, kappa	<b>Calculated MW:</b> 300 aa, 34 kDa	

## Applications

**Tested Applications:**  
FC

**Species Specificity:**  
Human

## Background Information

CD38, also known as ADP-ribosyl cyclase 1, is a type II transmembrane glycoprotein with a short N-terminal cytoplasmic tail, a single membrane-spanning domain, and a C-terminal extracellular region with four N-glycosylation sites (PMID: 2319135). The extracellular domain of CD38 has bifunctional enzyme activities that catalyze synthesis of cyclic ADP ribose from nicotinamide adenine dinucleotide (NAD) and hydrolysis of cyclic ADP ribose to adenosine diphosphoribose (PMID: 10636863). CD38 is expressed on a variety of hematopoietic and non-hematopoietic cells and is involved in diverse processes such as generation of calcium-mobilizing metabolites, cell activation, and chemotaxis (PMID: 25938500).

## Storage

**Storage:**  
Store at 2-8°C. Avoid exposure to light.

**Storage Buffer:**  
PBS with 0.1% sodium azide and 0.5% BSA, pH 7.3.

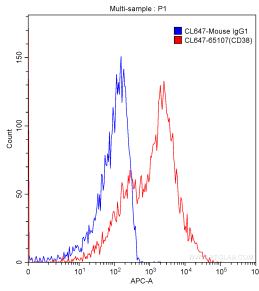
For technical support and original validation data for this product please contact:

T: 1 (888) 4PTGLAB (1-888-478-4522) (toll free in USA), or 1(312) 455-8498 (outside USA)

E: [proteintech@ptglab.com](mailto:proteintech@ptglab.com)  
W: [ptglab.com](http://ptglab.com)

This product is exclusively available under Proteintech Group brand and is not available to purchase from any other manufacturer.

## Selected Validation Data



100 ul human peripheral blood were surface stained 5.00 ul/test CoraLite®647-conjugated Anti-Human CD38 (CL647-65107, Clone: HB7) (red) or isotype control antibody (blue). Lymphocytes were gated for analysis. Samples were not fixed.