

For Research Use Only

CoraLite®647-conjugated Anti-Human CD8a (Hit8a)



Catalog Number: CL647-65113

Basic Information

Catalog Number:

CL647-65113

Size:

100tests , 5 µl/test

Source:

Mouse

Isotype:

IgG1

GenBank Accession Number:

BC025715

GeneID (NCBI):

925

Full Name:

CD8a molecule

Calculated MW:

235 aa, 26 kDa

Purification Method:

Affinity purification

CloneNo.:

Hit8a

Excitation/Emission maxima wavelengths:

650 nm/665 nm

Applications

Tested Applications:

FC

Species Specificity:

Human

Background Information

CD8 is a transmembrane glycoprotein composed of two disulfide-linked chains. It can be present as a homodimer of CD8a or as a heterodimer of CD8a and CD8β (PMID: 3264320; 8253791). CD8 is found on most thymocytes. The majority of class I-restricted T cells express mostly the CD8aβ heterodimer while CD8aα homodimers alone have been found on some gut intraepithelial T cells , on some T cell receptor (TCR) γδ T cells and on NK cells (PMID: 2111591; 1831127; 8420975). CD8 acts as a co-receptor that binds to MHC class-I and participates in cytotoxic T cell activation (PMID: 8499079). During T cell development, CD8 is required for positive selection of CD4-/CD8+ T cells (PMID: 1968084).

Storage

Storage:

Store at 2-8°C. Avoid exposure to light.

Storage Buffer:

PBS with 0.1% sodium azide and 0.5% BSA, pH 7.3.

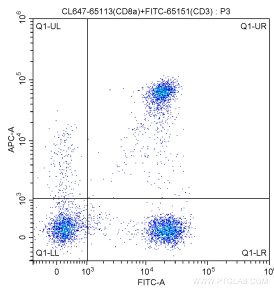
For technical support and original validation data for this product please contact:

T: 1 (888) 4PTGLAB (1-888-478-4522) (toll free in USA), or 1(312) 455-8498 (outside USA)

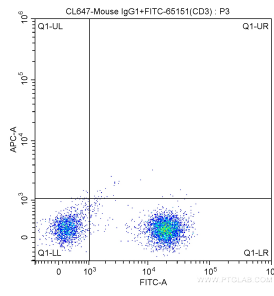
E: proteintech@ptglab.com
W: ptglab.com

This product is exclusively available under Proteintech Group brand and is not available to purchase from any other manufacturer.

Selected Validation Data



1X10⁶ human peripheral blood lymphocytes were surface stained with FITC Anti-Human CD3 (FITC-65151, Clone: UCHT1) and 5.00 ul CoraLite@647-conjugated Anti-Human CD8a (CL647-65113, Clone: Hit8a). Cells were not fixed.



1X10⁶ human peripheral blood lymphocytes were surface stained with FITC Anti-Human CD3 (FITC-65151, Clone: UCHT1) and CoraLite@647-conjugated Mouse IgG1 isotype control antibody. Cells were not fixed.