

For Research Use Only

CoraLite®647-conjugated Anti-Human CD279 (PD-1) (J110)



Catalog Number: CL647-65119

Basic Information

Catalog Number: CL647-65119	GenBank Accession Number: BC074740	Purification Method: Affinity purification
Size: 100tests , 5 µl/test	GeneID (NCBI): 5133	CloneNo.: J110
Source: Mouse	Full Name: programmed cell death 1	Excitation/Emission maxima wavelengths: 650 nm/665 nm
Isotype: Mouse IgG1	Calculated MW: 288 aa, 32 kDa	

Applications

Tested Applications:
FC

Species Specificity:
Human

Background Information

Programmed cell death 1 (PD-1, also known as CD279) is an immunoinhibitory receptor that belongs to the CD28/CTLA-4 subfamily of the Ig superfamily. It is a 288 amino acid (aa) type I transmembrane protein composed of one Ig superfamily domain, a stalk, a transmembrane domain, and an intracellular domain containing an immunoreceptor tyrosine-based inhibitory motif (ITIM) as well as an immunoreceptor tyrosine-based switch motif (ITSM) (PMID: 18173375). PD-1 is expressed during thymic development and is induced in a variety of hematopoietic cells in the periphery by antigen receptor signaling and cytokines (PMID: 20636820). Engagement of PD-1 by its ligands PD-L1 or PD-L2 transduces a signal that inhibits T-cell proliferation, cytokine production, and cytolytic function (PMID: 19426218). It is critical for the regulation of T cell function during immunity and tolerance. Blockade of PD-1 can overcome immune resistance and also has been shown to have antitumor activity (PMID: 22658127; 23169436).

Storage

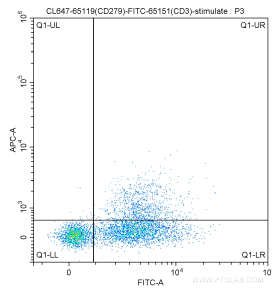
Storage:
Store at 2-8°C. Avoid exposure to light.

Storage Buffer:
PBS with 0.1% sodium azide and 0.5% BSA, pH 7.3.

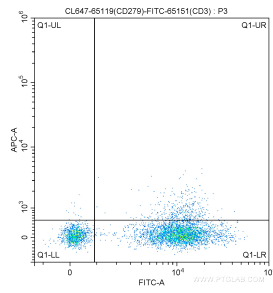
For technical support and original validation data for this product please contact:
T: 1 (888) 4PTGLAB (1-888-478-4522) (toll free in USA), or 1(312) 455-8498 (outside USA) E: proteintech@ptglab.com
W: ptglab.com

This product is exclusively available under Proteintech Group brand and is not available to purchase from any other manufacturer.

Selected Validation Data



1X10⁶ PHA-stimulated (5 µg/mL, overnight) human peripheral blood lymphocytes were surface stained with 5.00 ul CoraLite®647-conjugated Anti-Human CD279 (PD-1) (CL647-65119, Clone: J110) and FITC Anti-Human CD3 (FITC-65151, Clone: UCHT1). Cells were not fixed.



1X10⁶ human peripheral blood lymphocytes were surface stained with 5.00 ul CoraLite®647-conjugated Anti-Human CD279 (PD-1) (CL647-65119, Clone: J110) and FITC Anti-Human CD3 (FITC-65151, Clone: UCHT1). Cells were not fixed.