

For Research Use Only

# CoraLite® Plus 647 Anti-Human CD13 (WM15)

Catalog Number:CL647-65186



## Basic Information

### Catalog Number:

CL647-65186

### Size:

100tests , 5 µl/test

### Source:

Mouse

### Isotype:

IgG1, kappa

### GenBank Accession Number:

BC058928

### GeneID (NCBI):

290

### ENSEMBL Gene ID:

ENSG00000166825

### UNIPROT ID:

P15144

### Full Name:

alanyl (membrane) aminopeptidase

### Calculated MW:

110 kDa

### Purification Method:

Purified by protein-A affinity chromatography

### CloneNo.:

WM15

### Recommended Dilutions:

FC: 5 µl per 10<sup>6</sup> cells in 100 µl suspension

### Excitation/Emission maximum wavelengths:

654 nm / 674 nm

## Applications

### Tested Applications:

FC

### Species Specificity:

Human, Non-human primates

### Positive Controls:

FC : human PBMCs,

## Background Information

CD13, also named as APN, ANPEP (aminopeptidase N) or PEPN, is belongs to the peptidase M1 family. CD13 is a heavily glycosylated, ~150-240 kDa, type-II membrane, expressed by most cells of myeloid origin including monocytes, macrophages, granulocytes, and their hematopoietic precursors. It is also abundantly expressed in the brush border of epithelial cells from renal proximal tubules and small intestine, in prostatic epithelial cells, in bile duct canaliculi, in mast cells, and, in some cases, in fibroblasts and smooth muscle cells. CD13 is a multifunctional protein and plays varying roles in cell migration, cell proliferation, cell differentiation and so on. CD13 participates in angiogenesis generating and modulating angiogenic signals, and can be a marker of angiogenic vessels. CD13 is also a pan-myeloid marker, present on mature granulocytes and monocytes. (PMID: 8805662, 10098327, 18603472, 18097955, 17897790, 17888402, 21339174)

## Storage

### Storage:

Store at 2-8°C. Avoid exposure to light. Stable for one year after shipment.

### Storage Buffer:

PBS with 0.09% sodium azide and 0.5% BSA, pH7.3

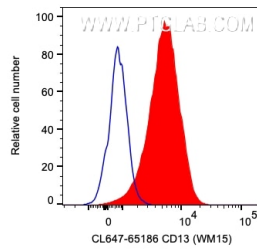
For technical support and original validation data for this product please contact:

T: 1 (888) 4PTGLAB (1-888-478-4522) (toll free in USA), or 1(312) 455-8498 (outside USA)

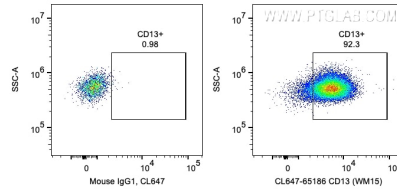
E: [proteintech@ptglab.com](mailto:proteintech@ptglab.com)  
W: [ptglab.com](http://ptglab.com)

This product is exclusively available under Proteintech Group brand and is not available to purchase from any other manufacturer.

## Selected Validation Data



1X10<sup>6</sup> human PBMCs were surface stained with 5 ul CoraLite® Plus 647 Anti-Human CD13 (CL647-65186, Clone: WM15), or Mouse IgG1 Isotype Control. Cells were not fixed. Granulocytes and monocytes were gated.



1X10<sup>6</sup> human PBMCs were surface stained with 5 ul CoraLite® Plus 647 Anti-Human CD13 (CL647-65186, Clone: WM15), or Mouse IgG1 Isotype Control. Cells were not fixed. Granulocytes and monocytes were gated.