

For Research Use Only

CoraLite®647-conjugated CD11a Mouse McAb



Catalog Number:CL647-65194

Basic Information

Catalog Number:

CL647-65194

Size:

100tests , 5 µl/test

Source:

Mouse

Isotype:

Mouse IgG1, kappa

GenBank Accession Number:

BC008777

GeneID (NCBI):

3683

Full Name:

integrin, alpha L (antigen CD11A (p180), Lymphocyte function-associated antigen 1; alpha polypeptide)

Calculated MW:

129 kDa

Purification Method:

Protein G purification

CloneNo.:

TS2/4

Excitation/Emission maxima wavelengths:

650 nm/665 nm

Applications

Tested Applications:

FC

Species Specificity:

Human

Background Information

CD11a, also known as integrin αL or LFA-1α, is a 170-180 kDa transmembrane glycoprotein that forms a heterodimer with CD18 (PMID: 7027264; 1672643). CD11a/CD18 (LFA-1) is expressed by all leukocytes and mediates cell adhesion through interactions with its ligands, intercellular adhesion molecule 1 (ICAM-1), ICAM-2, and ICAM-3 (PMID: 7479767). CD11a/CD18 also functions in lymphocyte costimulatory signaling (PMID: 1972160).

Storage

Storage:

Store at 2-8°C. Avoid exposure to light.

Storage Buffer:

PBS with 0.1% sodium azide and 0.5% BSA, pH 7.3.

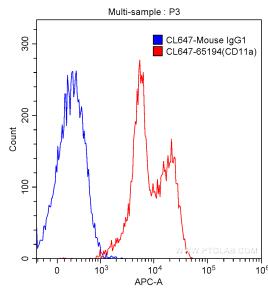
For technical support and original validation data for this product please contact:

T: 1 (888) 4PTGLAB (1-888-478-4522) (toll free in USA), or 1(312) 455-8498 (outside USA)

E: proteintech@ptglab.com
W: ptglab.com

This product is exclusively available under Proteintech Group brand and is not available to purchase from any other manufacturer.

Selected Validation Data



1X10⁶ human peripheral blood lymphocytes were surface stained with 5 ul CoraLite®647-conjugated Anti-Human CD11a (CL647-65194, Clone: TS2/4) (red) or isotype control antibody (blue). Samples were not fixed.