

For Research Use Only

CoraLite®647-conjugated HLA- DRA Mouse McAb



Catalog Number:CL647-65218

Basic Information

Catalog Number:

CL647-65218

Size:

100tests , 5 µl/test

Source:

Mouse

Isotype:

Mouse IgG2a, kappa

GenBank Accession Number:

BC032350

GeneID (NCBI):

3122

Full Name:

major histocompatibility complex,
class II, DR alpha

Calculated MW:

254 aa, 29 kDa

Purification Method:

Protein A purification

CloneNo.:

L243

Excitation/Emission maxima
wavelengths:

650 nm/665 nm

Applications

Tested Applications:

FC

Species Specificity:

Human

Background Information

Storage

Storage:

Store at 2-8°C. Avoid exposure to light.

Storage Buffer:

PBS with 0.1% sodium azide and 0.5% BSA, pH 7.3.

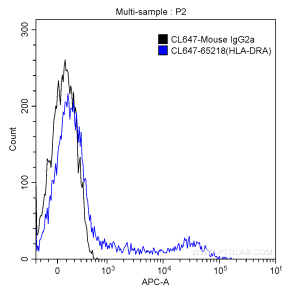
For technical support and original validation data for this product please contact:

T: 1 (888) 4PTGLAB (1-888-478-4522) (toll free
in USA), or 1(312) 455-8498 (outside USA)

E: proteintech@ptglab.com
W: ptglab.com

This product is exclusively available under Proteintech Group brand and is not available to purchase from any other manufacturer.

Selected Validation Data



1X10⁶ human peripheral blood lymphocytes were surface stained with 5 ul CoraLite®647-conjugated Anti-Human HLA-DRA (CL647-65218, Clone: L243) (blue) or isotype control antibody (black). Samples were not fixed.