

For Research Use Only

# CoraLite® Plus 647 Anti-Human CD45RA (F8-11-13)

Catalog Number: CL647-65226



## Basic Information

### Catalog Number:

CL647-65226

### Size:

100 tests, 5 µl/test

### Source:

Mouse

### Isotype:

IgG1, kappa

### GenBank Accession Number:

BC014239

### GeneID (NCBI):

5788

### ENSEMBL Gene ID:

ENSG00000081237

### UNIPROT ID:

P08575

### Full Name:

protein tyrosine phosphatase, receptor type, C

### Calculated MW:

1304 aa, 147 kDa

### Purification Method:

Affinity purification

### CloneNo.:

F8-11-13

### Recommended Dilutions:

FC: 5 µl per 10<sup>6</sup> cells in 100 µl suspension

### Excitation/Emission maxima wavelengths:

654 nm / 674 nm

## Applications

### Tested Applications:

FC

### Species Specificity:

human

### Positive Controls:

FC : human PBMCs,

## Background Information

CD45, also known as protein tyrosine phosphatase, receptor type C, is a type I transmembrane protein expressed on the surface of all haematopoietic cells with the exception of erythrocytes and platelets (PMID: 3489673; 28615666). CD45 is a pan-haematopoietic cell marker and has been shown to be essential for T- and B-cell activation and signalling (PMID: 9429890; 16378097). CD45 exists as multiple isoforms due to alternative splicing of three exons (4, 5, and 6, designated A, B, and C) in the extracellular domain (PMID: 12414720). CD45RA is expressed on naïve T cells, B cells, and monocytes (PMID: 1830500; 14687231).

## Storage

### Storage:

Store at 2-8°C. Avoid exposure to light. Stable for one year after shipment.

### Storage Buffer:

PBS with 0.09% sodium azide and 0.5% BSA, pH7.3

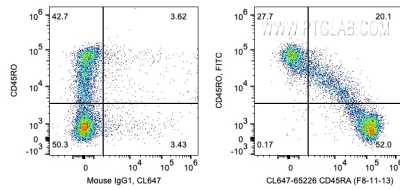
For technical support and original validation data for this product please contact:

T: 1 (888) 4PTGLAB (1-888-478-4522) (toll free in USA), or 1(312) 455-8498 (outside USA)

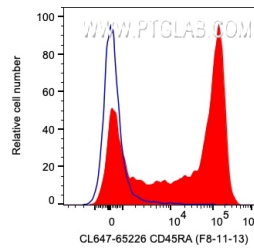
E: [proteintech@ptglab.com](mailto:proteintech@ptglab.com)  
W: [ptglab.com](http://ptglab.com)

This product is exclusively available under Proteintech Group brand and is not available to purchase from any other manufacturer.

## Selected Validation Data



1X10<sup>6</sup> human PBMCs were surface co-stained with FITC Anti-Human CD45RO and 5 ul CoraLite® Plus 647 Anti-Human CD45RA (CL647-65226, Clone: F8-11-13) or Mouse IgG1 Isotype Control. Cells were not fixed. Lymphocytes were gated.



1X10<sup>6</sup> human PBMCs were surface stained with 5 ul CoraLite® Plus 647 Anti-Human CD45RA (CL647-65226, Clone: F8-11-13) or Mouse IgG1 Isotype Control. Cells were not fixed. Lymphocytes were gated.