

For Research Use Only

CoraLite®647-conjugated Lamin B1 Monoclonal antibody



Catalog Number: CL647-66095

Featured Product

Basic Information

Catalog Number:

CL647-66095

GenBank Accession Number:

BC012295

Purification Method:

Protein G purification

Size:

100ul , Concentration: 2000 µg/ml by Bradford method using BSA as the standard;

GeneID (NCBI):

4001

CloneNo.:

3C10G12

Source:

Mouse

Full Name:

lamin B1

Recommended Dilutions:

IF 1:50-1:500

Isotype:

IgG1

Calculated MW:

66 kDa

Excitation/Emission maxima wavelengths:

650 nm/665 nm

Immunogen Catalog Number:

AG20522

Observed MW:

66-70 kDa

Applications

Tested Applications:

FC, IF

Positive Controls:

IF : HepG2 cells,

Species Specificity:

human, mouse, rat

Background Information

Lamins are components of the nuclear lamina, a fibrous layer on the nucleoplasmic side of the inner nuclear membrane, which is thought to provide a framework for the nuclear envelope and may also interact with chromatin. The nuclear lamina consists of a two-dimensional matrix of proteins located next to the inner nuclear membrane. The lamin family of proteins make up the matrix and are highly conserved in evolution. During mitosis, the lamina matrix is reversibly disassembled as the lamin proteins are phosphorylated. Vertebrate lamins consist of two types, A and B. This gene encodes one of the two B type proteins, B1. This protein is not suitable for samples where the nuclear envelope has been removed.

Storage

Storage:

Store at -20°C. Avoid exposure to light. Stable for one year after shipment.

Storage Buffer:

PBS with 50% Glycerol, 0.05% Proclin300, 0.5% BSA, pH 7.3.

Aliquoting is unnecessary for -20°C storage

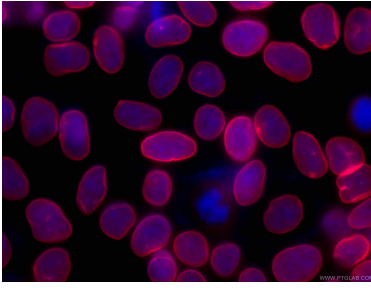
For technical support and original validation data for this product please contact:

T: 1 (888) 4PTGLAB (1-888-478-4522) (toll free in USA), or 1(312) 455-8498 (outside USA)

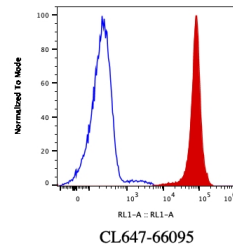
E: proteintech@ptglab.com
W: ptglab.com

This product is exclusively available under Proteintech Group brand and is not available to purchase from any other manufacturer.

Selected Validation Data



Immunofluorescent analysis of (-20°C Ethanol) fixed HepG2 cells using CL647-66095 (Lamin B1 antibody) at dilution of 1:100.



1X10⁶ HeLa cells were stained with 0.2 ug CoraLite®647 Anti-Human Lamin B1 (CL647-66095, Clone: 3C10G12) (red), or 0.2 ug CoraLite®647 Mouse IgG1 Isotype Control (CL647-66360, Clone: T1F8D3F10) (blue). Cells were fixed and permeabilized with Transcription Factor Staining Buffer Kit (PF00011).