

CoraLite® Plus 647-conjugated HBE1-Specific Monoclonal antibody

Catalog Number: **CL647-66151**

Basic Information

Catalog Number: CL647-66151	GenBank Accession Number: NM_005330	Purification Method: Protein G purification
Size: 100ul , Concentration: 1000 µg/ml by Nanodrop;	GeneID (NCBI): 3046	CloneNo.: 2C11G6
Source: Mouse	UNIPROT ID: P02100	Excitation/Emission maxima wavelengths: 654 nm / 674 nm
Isotype: IgG1	Full Name: hemoglobin, epsilon 1	
	Observed MW: 16 kDa	

Applications

Tested Applications:
FC (Intra)

Species Specificity:
human

Background Information

The hemoglobin molecule is a tetramer consisting of two α -globin-like polypeptide chains and two β -globin-like chains. The human hemoglobin genes are expressed in a tightly developmentally controlled fashion. ϵ -globin (HBE1) is the predominantly expressed gene during the embryonic stage. The epsilon hemoglobin chain seems to be the best marker for fetal nucleated red blood cells (NRBCs). Anti-HBE1 may be used to label and isolate fetal cells from maternal blood and can be useful in prenatal diagnosis. This antibody specifically recognizes the HBE1 and doesn't cross-react with other globin chains.

Storage

Storage:
Store at -20°C. Avoid exposure to light. Stable for one year after shipment.

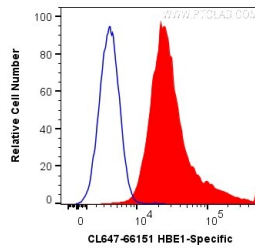
Storage Buffer:
PBS with 50% Glycerol, 0.05% Proclin300, 0.5% BSA, pH 7.3.

Aliquoting is unnecessary for -20°C storage

For technical support and original validation data for this product please contact:
T: 1 (888) 4PTGLAB (1-888-478-4522) (toll free in USA), or 1(312) 455-8498 (outside USA)
E: proteintech@ptglab.com
W: ptglab.com

This product is exclusively available under Proteintech Group brand and is not available to purchase from any other manufacturer.

Selected Validation Data



1X10⁶ K-562 cells were intracellularly stained with 0.2 ug CoraLite® Plus 647 Anti-Human HBE1-Specific (CL647-66151, Clone:2C11G6) (red), or 0.2 ug isotype control (blue). Cells were fixed with 4% PFA and permeabilized with Flow Cytometry Perm Buffer (PF00011-C).