

For Research Use Only

# CoraLite® Plus 647-conjugated TBP Monoclonal antibody

Catalog Number: CL647-66166



## Basic Information

|  |   |   |
|--|---|---|
| <b>Catalog Number:</b><br>CL647-66166                          | <b>GenBank Accession Number:</b><br>BC110341                  | <b>Purification Method:</b><br>Protein A purification             |
| <b>Size:</b><br>100ul , Concentration: 1000 µg/ml by Nanodrop; | <b>GeneID (NCBI):</b><br>6908                                 | <b>CloneNo.:</b><br>2H3B2   |
| <b>Source:</b><br>Mouse  | <b>UNIPROT ID:</b><br>P20226                                  | <b>Recommended Dilutions:</b><br>IF/ICC 1:50-1:500                |
| <b>Isotype:</b><br>IgG2a                                       | <b>Full Name:</b><br>TATA box binding protein                 | <b>Excitation/Emission maxima wavelengths:</b><br>654 nm / 674 nm |
| <b>Immunogen Catalog Number:</b><br>AG12383                    | <b>Calculated MW:</b><br>338 aa, 38 kDa                       |   |
|  | <b>Observed MW:</b><br>mouse/rat 33-36 kDa and human 37-43kDa |   |

## Applications

|   |   |
|---|---|
| <b>Tested Applications:</b><br>IF/ICC, FC (Intra)     | <b>Positive Controls:</b><br>IF/ICC : A431 cells, |
| <b>Species Specificity:</b><br>human, mouse, rat, pig |   |

## Background Information

The TATA binding protein (TBP) is a transcription factor that binds specifically to a DNA sequence TATA box. This DNA sequence is found about 25-30 base pairs upstream of the transcription start site in some eukaryotic gene promoters. TBP, along with a variety of TBP-associated factors, make up the TFIID, a general transcription factor that in turn makes up part of the RNA polymerase II preinitiation complex. As one of the few proteins in the preinitiation complex that binds DNA in a sequence-specific manner, it helps position RNA polymerase II over the transcription start site of the gene. However, it is estimated that only 10-20% of human promoters have TATA boxes. Therefore, TBP is probably not the only protein involved in positioning RNA polymerase II. This antibody detects human TBP (~40 kDa) and mouse/rat Tbp (~35 kDa).

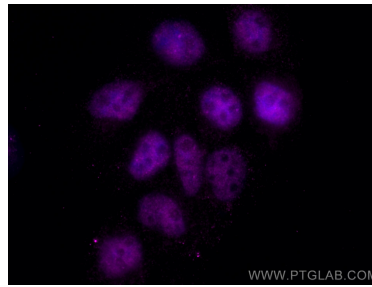
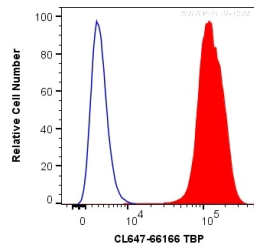
## Storage

**Storage:**  
Store at -20°C. Avoid exposure to light. Stable for one year after shipment.  
**Storage Buffer:**  
PBS with 50% Glycerol, 0.05% Proclin300, 0.5% BSA, pH 7.3.  
**Aliquoting is unnecessary for -20°C storage**

For technical support and original validation data for this product please contact:  
T: 1 (888) 4PTGLAB (1-888-478-4522) (toll free in USA), or 1(312) 455-8498 (outside USA)  
E: [proteintech@ptglab.com](mailto:proteintech@ptglab.com)  
W: [ptglab.com](http://ptglab.com)

This product is exclusively available under Proteintech Group brand and is not available to purchase from any other manufacturer.

## Selected Validation Data



1X10<sup>6</sup> HeLa cells were intracellularly stained with 0.2 ug CoraLite® Plus 647 Anti-Human TBP (CL647-66166, Clone:2H3B2) (red), or 0.2 ug Control Antibody. Cells were fixed and permeabilized with Transcription Factor Staining Buffer Kit (PF00011).

Immunofluorescent analysis of (4% PFA) fixed A431 cells using CoraLite® Plus 647 TBP antibody (CL647-66166, Clone: 2H3B2 ) at dilution of 1:200.