

For Research Use Only

CoraLite® Plus 647-conjugated UCH-L1/PGP9.5 Monoclonal antibody

Catalog Number: CL647-66230

Featured Product



Basic Information

Catalog Number:

CL647-66230

Size:

100ul , Concentration: 1 mg/mL by Nanodrop;

Source:

Mouse

Isotype:

IgG1

Immunogen Catalog Number:

AG6547

GenBank Accession Number:

BC000332

GeneID (NCBI):

7345

UNIPROT ID:

P09936

Full Name:

ubiquitin carboxyl-terminal esterase L1 (ubiquitin thiolesterase)

Calculated MW:

25 kDa

Observed MW:

27 kDa

Purification Method:

Protein G purification

CloneNo.:

1C9E11

Recommended Dilutions:

IF/ICC: 1:50-1:500

FC (Intra): 0.80 ug per 10⁶ cells in a 100 µl suspension

Excitation/Emission maxima wavelengths:

654 nm / 674 nm

Applications

Tested Applications:

IF/ICC, FC (Intra)

Species Specificity:

human, mouse, rat, pig

Positive Controls:

IF/ICC : SH-SY5Y cells,

FC (Intra) : SH-SY5Y cells,

Background Information

Ubiquitin C-terminal hydrolase L1 (UCHL1) was originally identified as a neuronal protein that accounts for nearly 2% of total brain proteins. UCHL1 activity protects neurons from hypoxic injury, and binding of stroke-induced reactive lipid species to the cysteine 152 (C152) of UCHL1 unfolds the protein and disrupts its function. Reduced hydrolytic activity of mutant UCHL1 is implicated in the pathophysiologic process of Parkinson's and Alzheimer's disease due to abnormal neurotoxic protein aggregation. (PMID: 31356902, PMID: 30760601)

Storage

Storage:

Store at -20°C. Avoid exposure to light. Stable for one year after shipment.

Storage Buffer:

PBS with 50% glycerol, 0.05% Proclin300, 0.5% BSA, pH7.3

Aliquoting is unnecessary for -20°C storage

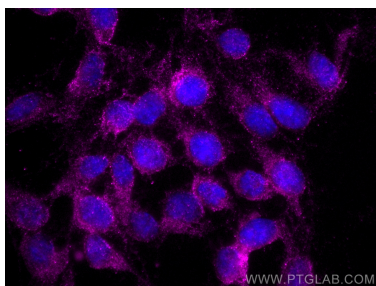
For technical support and original validation data for this product please contact:

T: 1 (888) 4PTGLAB (1-888-478-4522) (toll free in USA), or 1(312) 455-8498 (outside USA)

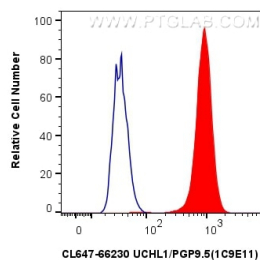
E: proteintech@ptglab.com
W: ptglab.com

This product is exclusively available under Proteintech Group brand and is not available to purchase from any other manufacturer.

Selected Validation Data



Immunofluorescent analysis of (4% PFA) fixed SH-SY5Y cells using CoraLite® Plus 647 UCHL1/PGP9.5 antibody (CL647-66230, Clone: 1C9E11) at dilution of 1:200.



1x10⁶ SH-SY5Y cells were intracellularly stained with 0.8 ug CoraLite® Plus 647-conjugated UCHL1/PGP9.5 Monoclonal antibody (CL647-66230, Clone:1C9E11)(red), or 0.8 ug CoraLite® Plus 647 Mouse IgG1 Isotype Control (MOPC-21) (CL647-65124, Clone: MOPC-21) (blue). Cells were fixed with 4% PFA and permeabilized with Flow Cytometry Perm Buffer (PF00011-C).