

For Research Use Only

# CoraLite® Plus 647-conjugated BCL6 Monoclonal antibody

Catalog Number:CL647-66340



## Basic Information

Catalog Number:

CL647-66340

Size:

100ul , Concentration: 1000 µg/ml by 604 Nanodrop;

Source:

Mouse

Isotype:

IgG1

Immunogen Catalog Number:

AG15519

GenBank Accession Number:

BC150184

GeneID (NCBI):

604

UNIPROT ID:

P41182

Full Name:

B-cell CLL/lymphoma 6

Calculated MW:

706 aa, 79 kDa

Observed MW:

85 kDa

Purification Method:

Protein G purification

CloneNo.:

1E6B1

Recommended Dilutions:

FC (Intra): 0.80 ug per 10<sup>6</sup> cells in a 100 µl suspension

FC: 0.80 ug per 10<sup>6</sup> cells in a 100 µl suspension

Excitation/Emission maxima wavelengths:

654 nm / 674 nm

## Applications

Tested Applications:

FC (Intra)

Species Specificity:

human

Positive Controls:

FC (Intra) : Ramos cells,

FC : Ramos cells,

## Background Information

BCL6, a zinc finger transcription factor, contains a N-terminal BTB/POZ domain and C-terminal zinc finger DNA-binding motifs and represses transcription of a wide range of target proteins and microRNAs. BCL6 protein has been reported as a master regulator of B lymphocyte development and growth, and altered BCL6 protein expression was implicated in pathogenesis of diverse human hematologic malignancies, especially in the diffuse large B cell lymphoma (DLBCL). BCL6 is required for the development of T follicular helper T cells (TFH), a helper T cell subset required for the formation of mature and productive GCs. BCL6 has also been shown to play important regulatory roles in macrophages. This antibody only recognize human species.

## Storage

Storage:

Store at -20°C. Avoid exposure to light. Stable for one year after shipment.

Storage Buffer:

PBS with 50% glycerol, 0.05% Proclin300, 0.5% BSA, pH7.3

Aliquoting is unnecessary for -20°C storage

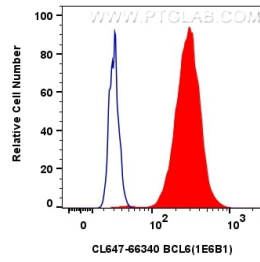
For technical support and original validation data for this product please contact:

T: 1 (888) 4PTGLAB (1-888-478-4522) (toll free in USA), or 1(312) 455-8498 (outside USA)

E: [proteintech@ptglab.com](mailto:proteintech@ptglab.com)  
W: [ptglab.com](http://ptglab.com)

This product is exclusively available under Proteintech Group brand and is not available to purchase from any other manufacturer.

## Selected Validation Data



$1 \times 10^6$  Ramos cells were intracellularly stained with 0.8  $\mu$ g CoraLite® Plus 647-conjugated BCL6 Monoclonal antibody (CL647-66340, Clone:1E6B1) (red), or 0.8  $\mu$ g CoraLite® Plus 647 Mouse IgG1 Isotype Control (MOPC-21) (CL647-65124, Clone: MOPC-21) (blue). Cells were fixed and permeabilized with Transcription Factor Staining Buffer Kit (PF00011).