

For Research Use Only

CoraLite® Plus 647-conjugated CAPRIN1 Monoclonal antibody

Catalog Number:CL647-66352



Basic Information

Catalog Number: CL647-66352	GenBank Accession Number: BC001731	Purification Method: Protein G purification
Size: 100ul , Concentration: 1000 ug/ml by Nanodrop;	GeneID (NCBI): 4076	CloneNo.: 6B10F11
Source: Mouse	UNIPROT ID: Q14444	Recommended Dilutions: IF/ICC 1:50-1:500
Isotype: IgG1	Full Name: cell cycle associated protein 1	Excitation/Emission maxima wavelengths: 654 nm / 674 nm
Immunogen Catalog Number: AG7413	Calculated MW: 78 kDa	
	Observed MW: 116 kDa	

Applications

Tested Applications: IF/ICC	Positive Controls: IF/ICC : HeLa cells,
Species Specificity: human	

Background Information

CAPRIN1(Caprin-1) is a cytoplasmic phosphoprotein which may regulate the transport and translation of mRNAs of proteins involved in synaptic plasticity in neurons and cell proliferation and migration in multiple cell types. Its levels, except in the brain, are tightly correlated with cellular proliferation. Suppression of expression of human Caprin-1 resulted in slowing of the proliferation rate, which suggests its essential for normal cellular proliferation.

Storage

Storage:
Store at -20°C. Avoid exposure to light. Stable for one year after shipment.
Storage Buffer:
PBS with 50% Glycerol, 0.05% Proclin300, 0.5% BSA, pH 7.3.
Aliquoting is unnecessary for -20°C storage

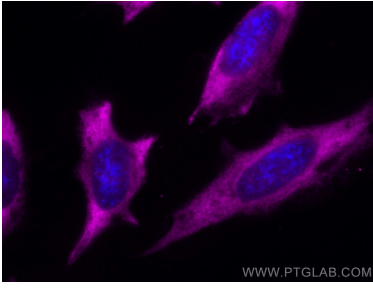
For technical support and original validation data for this product please contact:

T: 1 (888) 4PTGLAB (1-888-478-4522) (toll free
in USA), or 1(312) 455-8498 (outside USA)

E: proteintech@ptglab.com
W: ptglab.com

This product is exclusively available under Proteintech Group brand and is not available to purchase from any other manufacturer.

Selected Validation Data



Immunofluorescent analysis of (-20°C Ethanol) fixed HeLa cells using Coralite® Plus 647 CAPRIN1 antibody (CL647-66352, Clone: 6B10F11) at dilution of 1:200.