

For Research Use Only

CoraLite® Plus 647-conjugated CALD1 Monoclonal antibody

Catalog Number: CL647-66693

Featured Product



Basic Information

Catalog Number:

CL647-66693

Size:

100ul, Concentration: 1000 µg/ml by 800 Nanodrop;

Source:

Mouse

Isotype:

IgG2b

Immunogen Catalog Number:

AG13676

GenBank Accession Number:

BC040354

GeneID (NCBI):

800

UNIPROT ID:

Q05682

Full Name:

caldesmon 1

Calculated MW:

538 aa, 63 kDa

Purification Method:

Protein A purification

CloneNo.:

1E1C11

Recommended Dilutions:

IF/ICC: 1:50-1:500

FC (Intra): 0.20 ug per 10⁶ cells in a 100 µl suspension

Excitation/Emission maxima wavelengths:

654 nm / 674 nm

Applications

Tested Applications:

IF/ICC, FC (Intra)

Species Specificity:

human

Positive Controls:

IF/ICC : HepG2 cells,

FC (Intra) : HeLa cells,

Storage

Storage:

Store at -20°C. Avoid exposure to light. Stable for one year after shipment.

Storage Buffer:

PBS with 50% glycerol, 0.05% Proclin300, 0.5% BSA, pH7.3

Aliquoting is unnecessary for -20°C storage

For technical support and original validation data for this product please contact:

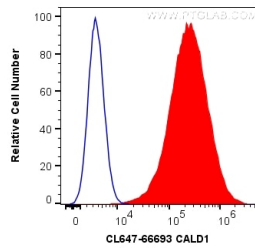
T: 1 (888) 4PTGLAB (1-888-478-4522) (toll free in USA), or 1(312) 455-8498 (outside USA)

E: proteintech@ptglab.com

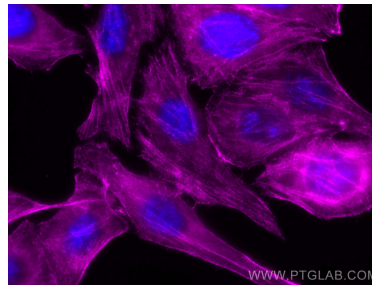
W: ptglab.com

This product is exclusively available under Proteintech Group brand and is not available to purchase from any other manufacturer.

Selected Validation Data



1X10⁶ HeLa cells were intracellularly stained with 0.2 ug CoraLite® Plus 647 Anti-Human CALD1 (CL647-66693, Clone:1E1C11) (red), or 0.2 ug Control Antibody. Cells were fixed with 4% PFA and permeabilized with Flow Cytometry Perm Buffer (PF00011-C).



Immunofluorescent analysis of (-20°C Methanol) fixed HepG2 cells using CoraLite® Plus 647 CALD1 antibody (CL647-66693, Clone: 1E1C11) at dilution of 1:100.