

For Research Use Only

# CoraLite®647-conjugated Cyclin B2 Monoclonal antibody



Catalog Number:CL647-67726

## Basic Information

<b>Catalog Number:</b> CL647-67726	<b>GenBank Accession Number:</b> BC105086	<b>Purification Method:</b> Protein A purification
<b>Size:</b> 100ul , Concentration: 1000 µg/ml by Nanodrop;	<b>GeneID (NCBI):</b> 9133	<b>CloneNo.:</b> 2G8B7
<b>Source:</b> Mouse	<b>Full Name:</b> cyclin B2	<b>Recommended Dilutions:</b> IF 1:50-1:500
<b>Isotype:</b> IgG2a	<b>Calculated MW:</b> 398 aa, 45 kDa	<b>Excitation/Emission maxima wavelengths:</b> 650 nm/665 nm
<b>Immunogen Catalog Number:</b> AG16329		

## Applications

<b>Tested Applications:</b> IF	<b>Positive Controls:</b> IF : mouse testis tissue,
<b>Species Specificity:</b> Human, mouse	

## Background Information

Cyclin B2 (CCNB2) is a member of cyclin family proteins, which regulate the activities of cyclin dependent kinases (CDKs) and different cyclins function spatially and temporally in specific phases of the cell cycle. Cyclin B2 serves a key role in progression of G2/M transition. Cyclin B2 has been found to be up-regulated in a variety of human cancers, such as adrenocortical carcinoma, breast carcinoma, colorectal adenocarcinoma, pituitary adenoma and gastric cancer. The aberrant expression of Cyclin B2 deregulates spindle checkpoints in the cell cycle and results in chromosomal instability (CIN), one of the signature phenotypes of most cancers. Moreover, serum circulating Cyclin B2 mRNA expression has been found increased in cancer patients and associated with cancer stage and metastasis status.

## Storage

**Storage:**  
Store at -20°C. Avoid exposure to light.  
**Storage Buffer:**  
PBS with 50% Glycerol, 0.05% Proclin300, 0.5% BSA, pH 7.3.  
Aliquoting is unnecessary for -20°C storage

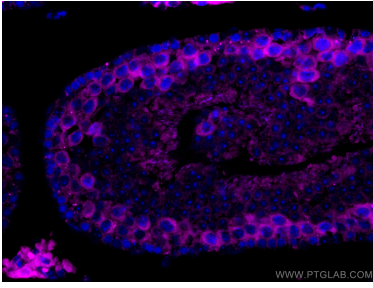
For technical support and original validation data for this product please contact:

T: 1 (888) 4PTGLAB (1-888-478-4522) (toll free  
in USA), or 1(312) 455-8498 (outside USA)

E: [proteintech@ptglab.com](mailto:proteintech@ptglab.com)  
W: [ptglab.com](http://ptglab.com)

**This product is exclusively available under Proteintech Group brand and is not available to purchase from any other manufacturer.**

## Selected Validation Data



Immunofluorescent analysis of (4% PFA) fixed mouse testis tissue using CoraLite®647 Cyclin B2 antibody (CL647-67726, Clone: 2G8B7) at dilution of 1:200.